



Wall Mounted Infrared Heater

- 1500 Watts with Two Heat Settings
- Thermal Cutoff Protection
- Tip-Over Switch
- Room Temperature LED Display
- Precision Temperature Control
- Easy Push-Button Controls
- Advanced Dual Heating System (ADHS)
- Smart WIFI control 



Model No.: DR-908W

Owner's Manual

PLEASE READ AND
SAVE THESE INSTRUCTIONS

CONGRATULATIONS!

The Dr. Infrared Heater you have just purchased is a safe and powerful heater, designed to heat a room after a few minutes of operation. The far-infrared Quartz-PTC heating system is an excellent choice for safely heating whole room, while saving on heating costs.

Additionally, this heater includes an overheat protection system, and an inlet air overheat protection system designed to ensure your safety.

This heater does not reduce humidity or oxygen in your home or office, *promoting a healthier environment!*

Before using your Dr. Infrared Heater, please take a few minutes to read these instructions, and review the product's limited warranty.

Thank you!

WARNING! To reduce the risk of fire, electric shock, or personal injury, read all the instructions before using this heater. This appliance is intended for household or personal use only as described in this manual. Any other use including but not limited to commercial, agricultural, or outdoor use, is not recommended by the manufacturer and may cause fire, electric shock, injury and/or damages. The use of any attachments and/or accessories not recommended or sold by Dr. Infrared Heater Products may cause hazards and void the warranty.

CAUTION- High temperature! Keep electrical cords, drapery, and other furnishings at least 3 feet (0.9 m) from the front and rear of the heater.

IMPORTANT INSTRUCTIONS

When using this appliance, basic precautions should always be followed to reduce the risk of fire, electric shock, and injury to persons, including the following.

1. Read all the instructions before using this heater.
2. This heater is hot when in use. To avoid burns, do not let bare skin touch hot surfaces. Use handle when moving this heater. Keep combustible materials, such as furniture, pillows, bedding, papers, clothes, and curtains at least 3 feet (0.9 m) from the front of the heater and keep them away from the sides and rear.
3. Extreme caution is necessary when any heater is used by or near children or persons with physical challenges and whenever the heater is left

operating and unattended.

4. Do not install closer than 1 foot (0.3 m) from both sides of heater to any adjacent surface/wall.
5. Do not operate the heater with a damaged cord or plug, or after the heater malfunctions, has been dropped, or damaged in any manner. Return the heater to an authorized service facility for examination, electrical or mechanical adjustment, or repair.
6. Do not use outdoors.
7. This heater is not intended for use in bathrooms, laundry areas or similar locations. Never locate the unit where it may fall into a bathtub or other water container.
8. Do not run the cord under carpeting and do not cover the cord with throw rugs, runners or the like. Do not route cord under furniture or appliances. Arrange the cord away from traffic areas to avoid a tripping hazard.
9. To disconnect the heater, turn controls to OFF, then remove the plug from outlet.
10. Do not insert or allow foreign objects to enter any ventilation or exhaust opening as this may cause an electric shock, or fire, or damage to the heater.
11. Connect to properly grounded outlets only.
12. To prevent a possible fire, do not block air intakes or exhaust openings in any manner. Do not use on soft surfaces, like a bed, where openings may become blocked. Use the heater on flat, dry surfaces only.
13. A heater has hot and arcing or sparking parts inside. Do not use the heater in areas where gasoline, paint or flammable liquids are used or stored.
14. Use this heater only as described in this manual. Any other use not recommended by the manufacturer may cause fire, electric shock, or injury to persons.
15. **Never** clean this heater while it is plugged in. Do not immerse in water. To disconnect, turn control to OFF, then remove the plug from the outlet by grasping it and pulling it from the outlet. Never yank on the cord.
16. Always unplug the heater when it is not in use.
17. Always plug heater directly into a wall outlet/receptacle. Never use with an extension cord or relocatable power tap (outlet/power strip).
18. It is normal for the heater's plug and cord to feel warm to the touch. A plug

or cord which becomes hot to the touch or becomes distorted in shape may be a result of a worn electrical outlet. Worn outlets or receptacles should be replaced prior to further use of the heater. Plugging this heater into a worn outlet may result in overheating of the power cord or fire.

19. Make sure the plug is fully inserted into an appropriate receptacle. Be mindful that receptacles also deteriorate due to aging and continuous use. Check periodically for signs of overheating or deformations of the plug. If any overheating or deformation occurs, immediately discontinue using the heater and contact Dr. Infrared Heater Authorized Service Center.
20. **CHECK YOUR HEATER CORD AND PLUG CONNECTIONS.** Faulty wall outlet connections or loose plugs can cause the outlets or plug to overheat. During use, please check frequently to determine if your plug outlet or faceplate is HOT! If it is hot, discontinue using the heater and/or make certain a qualified electrician checks and replaces the faulty outlet(s).

CAUTION: This appliance is not intended for use by persons (including children) with reduced physical, sensory or mental capabilities, or lack of experience and knowledge, unless they have been given supervision or instruction concerning use of the appliance by a person responsible for their safety.

SAVE THESE INSTRUCTIONS

Product Specifications

Voltage Rating	120V (60Hz)
Power Consumption	1500W
Unit Size	15-17/64 in. (H) x 11-21/64 in. (W) x 6-21/64 in. (D)
Unit Weight	8.46 lbs.

Special Features

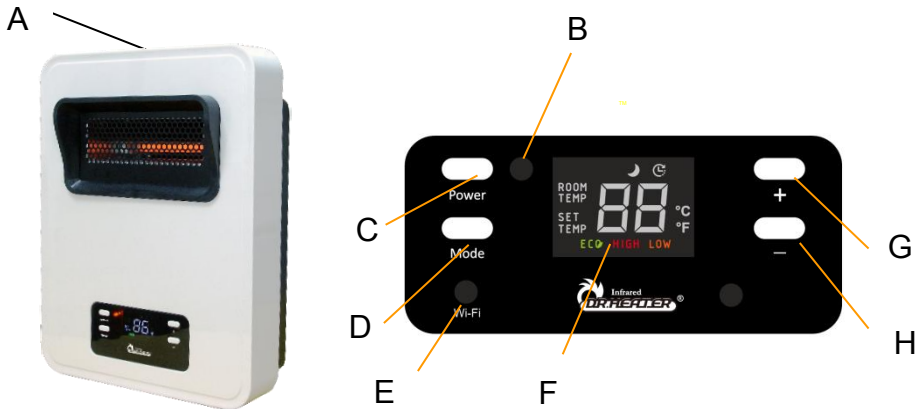
LED Display – When the unit is plugged in, the POWER LED will light. To turn the heater ON, press the MODE button, the heater will wait in ECO Mode. At ECO mode, it will display the factory default setting 68°F, you can set your desired temperature between 50°F- 86°F.

Overheat Cut-Off Protection System –This heater includes a protection system that cuts off the unit if it overheats for any reason.

Inlet Air Overheat Protection System – This heater will automatically cut off if the inlet air duct becomes obstructed and causes the unit to overheat.

Safety Tip-Over Switch – The Dr. Infrared Heater is designed to cut off automatically when tipped in any direction. Place the heater on a flat, smooth, stable surface to prevent the heater from tipping over again. When returned to a normal upright position, the heater is ready for use again. This is a safety feature to avoid the possibility of fire should the unit be tipped accidentally.

Advanced Dual Heating System (ADHS) - Dr. Heater is the first to feature a dual heating system for maximum heat transfer rate. It combines the energy efficiency of infrared heat with the comfort of convection heat to heat your room fast and comfortably—without hot spots and cold spots.



Features

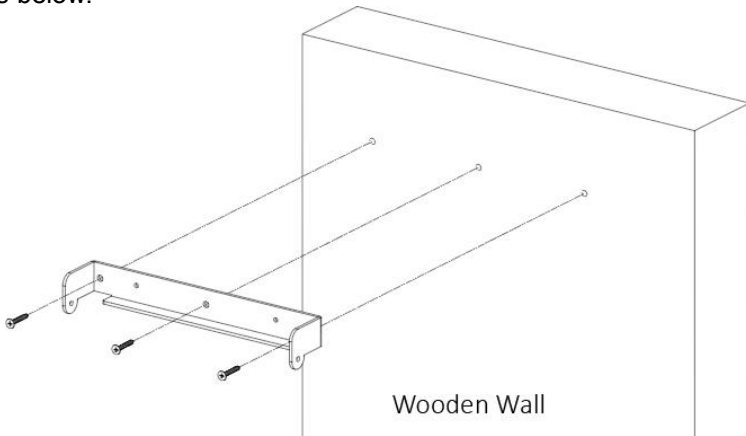
- A.** “Cool-Touch” cabinet
- B.** POWER LED
- C.** ON/OFF button
- D.** MODE button

- E.** WIFI LED
- F.** LED temperature display
- G.** Increase temperature button
- H.** Decrease temperature button

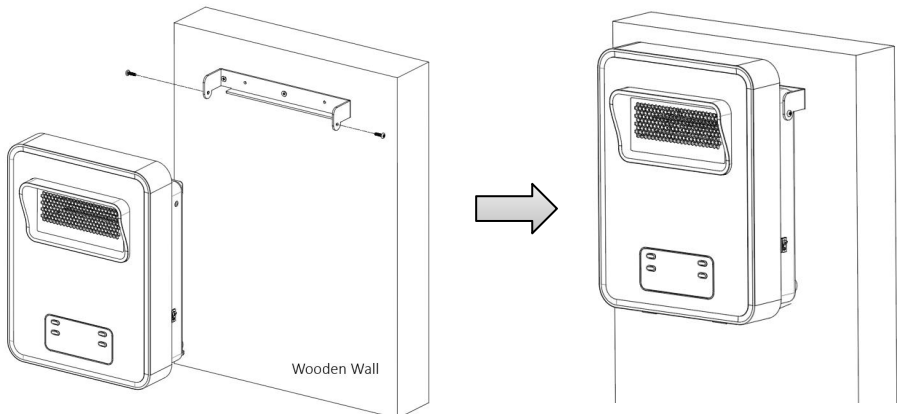
Screw Kit Contents	
Description	Qty
3/16" x 1" (ST5*25) Wood Screw	3
M5x12mm Screw	2

Installation Instructions

1. Attach the bracket to the wooden wall and secure with wood screws (3/16" x 1") as below.



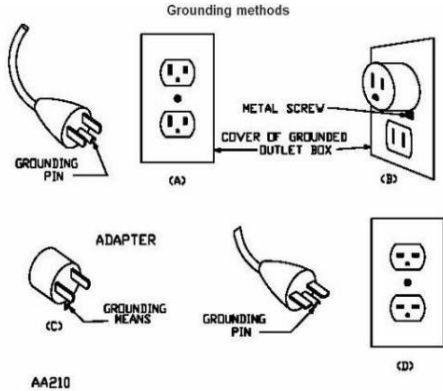
2. Attach the heater to the mounting bracket and secure with screws (M5x12mm) as below.



Operating Instructions

1. Plug the power supply cord into a grounded wall outlet. (120VAC, 60Hz)

IMPORTANT: This heater is for use on 120 volts. This heater comes with a grounded (three-prong) plug. The grounded plug must be used with a grounded outlet. Do not use an adapter in two-slot wall outlet unless the grounded plug of the adapter properly connects to a building ground. Using the heater without a properly grounded outlet or adapter could result in an electric shock hazard.



The cord has a plug as shown at A in the following figure. An adapter, as shown at C, is available for connecting three-blade grounding type plugs to two-slot receptacles

The green grounding lug extending from the adapter must be connected to a permanent ground such as a properly grounded outlet box. The adapter should not be used if a three-slot grounded receptacle is available.

2. TURNING THE HEATER ON

Plug in unit to power outlet, the POWER LED will light. To turn the heater ON, press the MODE button, the heater will wait in ECO Mode.

3. HEATING MODES

Press the MODE button to toggle between the different modes: ECO, HIGH, LOW.

4. ECO MODE – 1500W/1000W

ECO mode is a computerized mode to optimize energy efficiency. It will programmatically select between HIGH and LOW power mode to heat up the room to the desired temperature in the most effective way. Once the desired temperature is achieved, the heater will maintain the room to the set temperature. ECO mode is the environmentally friendly operating mode.

5. HIGH POWER MODE – 1500W

HIGH mode will control the heater to operate at high power until the room reached the set temperature. The heater will stop heating and initiate component cooling process before turning off the fan. Once the desired temperature is achieved, the heater will maintain the room to the set temperature.

6. LOW POWER MODE – 1000W

LOW mode will control the heater to operate at low power until the room reached the set temperature. The heater will stop heating and initiate

component cooling process before turning off the fan. Once the desired temperature is achieved, the heater will maintain the room to the set temperature.

7. SETTING THE TEMPERATURE

Choose the desire Mode: ECO, HIGH, or LOW. To set the desired temperature:

Press the **+** button once until the numeric temperature starts flashing.

Press the **+** button again to increase the temperature or the **-** button to decrease the temperature.

Once the temperature is set, the heater will warm up the room using the selected Mode. Heater will sample the room temperature every 4 minutes after the desired temperature is reached.

8. Night Mode

Night mode is design for quiet operation in the night. When the surrounding environment becomes dark, or the heater can't detect the light, it will turn into the Night Mode automatically. In this mode, when the heater reached the set temperature, it will sample the room temperature less frequently, 30 minutes per sample. When the heater detects the light, it will turn into the ECO Mode automatically.

9. Display the room temperature

The display shows the set temperature all the time, press and hold the MODE button and then press the **-** button. The room temperature will display for 30 seconds. It will return to set temperature after 30 seconds.

10. Display Celsius

To display Celsius, press and hold the MODE button for 2 seconds. Press and hold the MODE button for 2 seconds again to change back to Fahrenheit.

11. Memory function

This heater has a memory function, when you turn off by pressing the POWER button, in case of power outages. If the fan operates at maximum speed when it shuts off in a power outage, it will resume its operation at the maximum speed when the power comes back on. The memory function registers the last operating speed.

12. WIFI function

This heater has a WIFI function. You can control the heater with your phone by connecting it to the heater WIFI.

[Heater WIFI connection]

Press on the WIFI switch in the right side of the heater, then press and hold the **+** and **-** button for 3 seconds. The WIFI LED will flash while connecting with your phone. When the WIFI connection is succeed, the led will always light up.

Now you need to download the corresponding mobile app.

App: **Smart Living**

Compatible systems: **IOS, Android**

Work environment: **Requires Wi-fi (needs Wi-fi network name and password)**

[APP Installation]

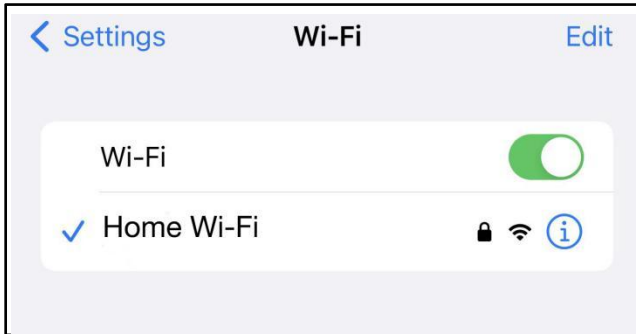


Smart Living



[Steps]

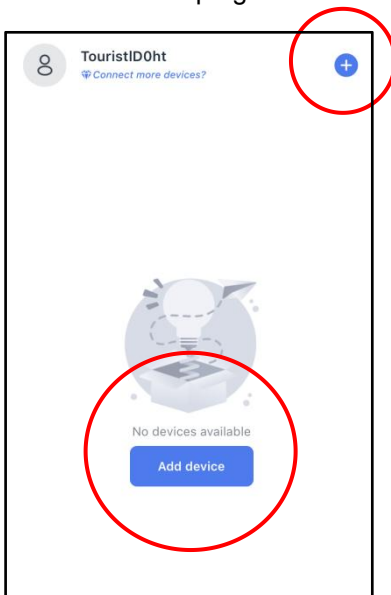
1. Connect to Wi-fi on your phone and note the username and password separately.



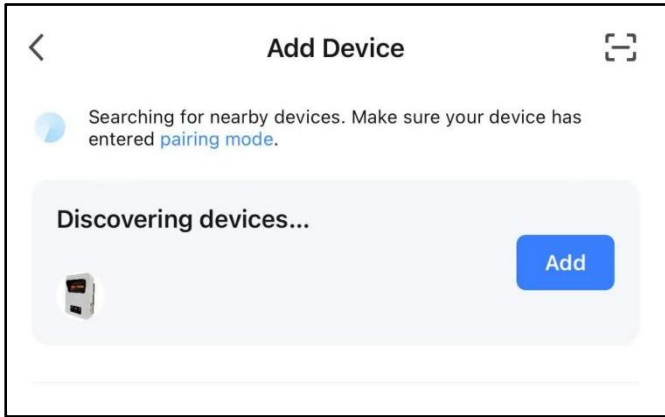
2. Open “Smart Living” APP.



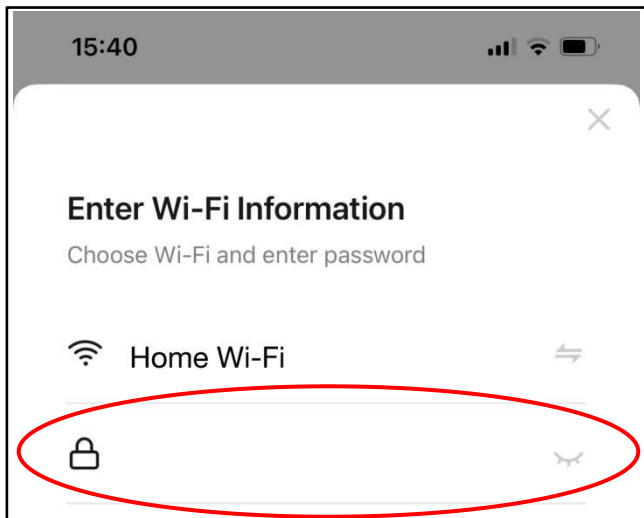
3. Click the “Add Device” button in the middle of the page or the “+” (plus) button on the top right corner.



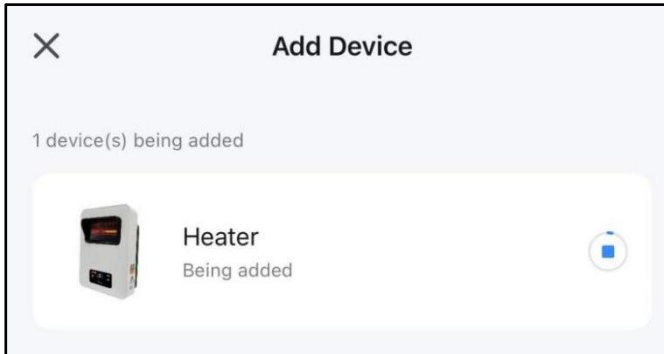
4. Wait for a second, the icon of “Discovering devices...” will appear on the screen. Click the “Add” button to create a new appliance on the right of “Discovering devices...”.



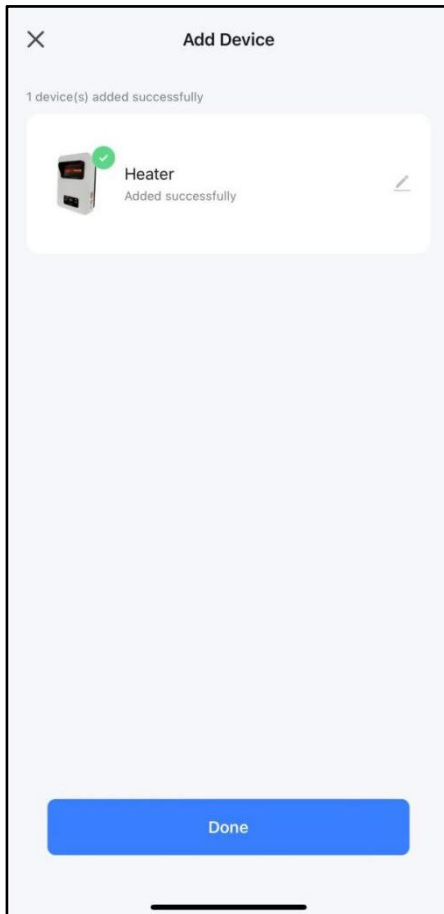
5. Click the Wi-fi option same as step 4 and enter the password.



6. Click the “next” button and hold on a second to record the information you entered.

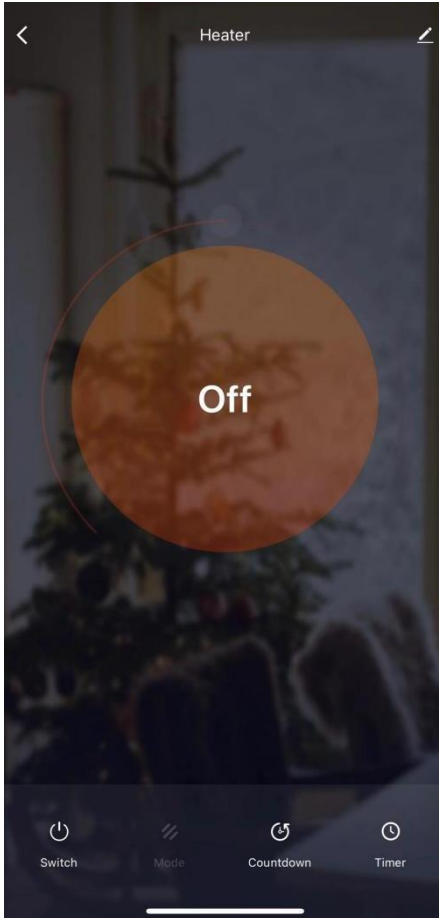


7. After recording, you may see the appliance as below. Then click the “Done” button.

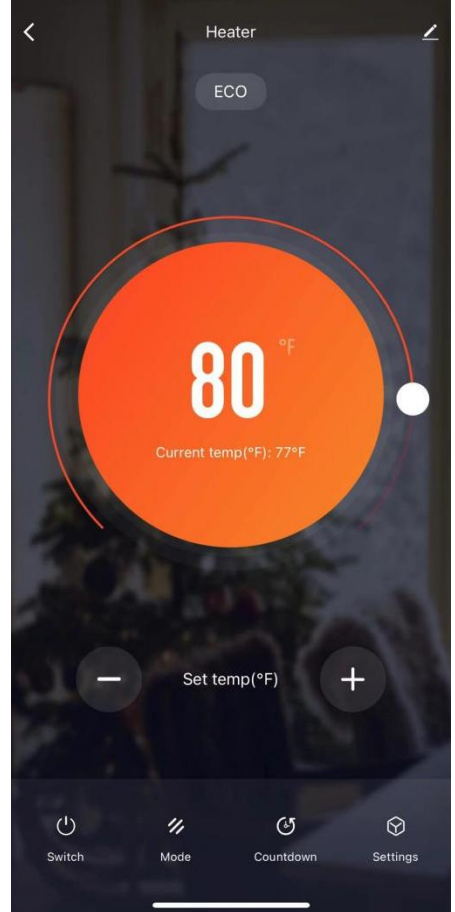


8. Now you can get started to control the heater with your phone.

OFF :



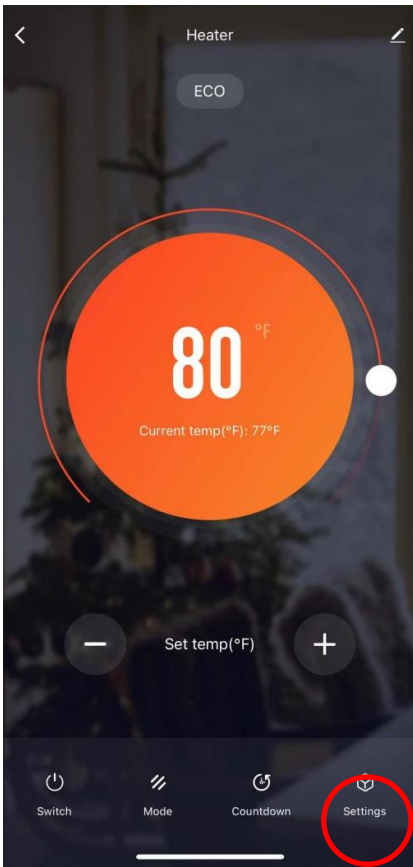
ON :

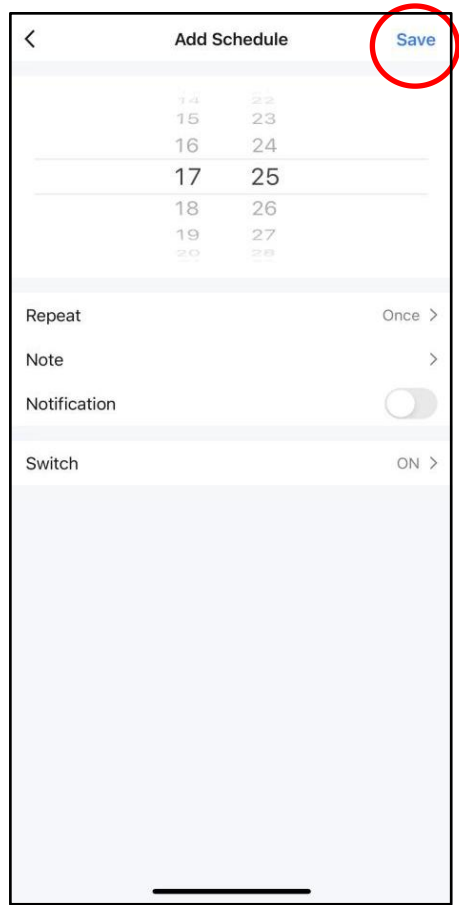
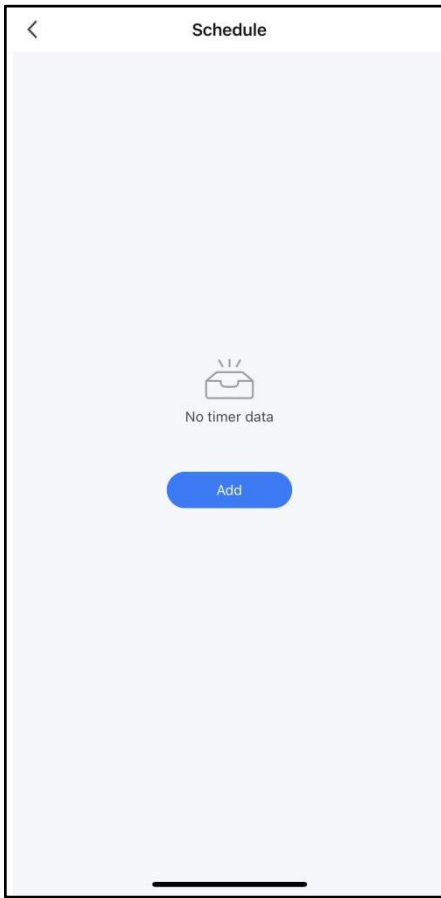


9. Scheduled power on & power off function

You can determine the power on or off times on this appliance. Click the "Settings" button on the bottom right corner, click the "Timer" button, then click the "Add" button to set the heater working schedule. Finally, click the "Save" button to setup the timer.

CAUTION: When the heater working schedule is determined, the only way to cancel is press "Switch" button on the appliance or press off the WIFI button on the right side of the heater.





Remote Controller

HOW TO INSERT BATTERIES



NOTE: Remove the batteries if the remote control is not to be used for a month or more. Batteries left in the unit may leak and cause damage.

DO NOT MIX OLD AND NEW BATTERIES IN USE! DO NOT MIX ALKALINE, STANDARD (CARBON-ZINC) OR RECHARGEABLE (NICKEL-CADMIUM) BATTERIES IN USE!

Instructions for the Use of the IR Remote Control

The buttons on the remote controller functions in the same manner as those on the control panel on the front of the heater. Set the timer by using the remote control.

Setting the Timer

1. Press the TIMER button until Set Time starts flashing. The default value is 3 hours.
2. Press the “+” button to increase the set time or the “-” button to decrease the set time.
The timer can be set from 1 to 12 hours. The timer will set and execute after the LED display stops flashing. The heater will shut OFF automatically when the set time is reached.
3. To turn the timer OFF, follow step 1, pressing the “-” button to set the time to 0. The timer feature will turn off when the LED stops flashing.

Maintenance

1. Always turn OFF the heater and disconnect the cord from the electrical outlet **before** cleaning the unit.
2. Light accumulation of dust may be removed from the heater with a soft cloth or vacuum cleaner.
3. Wipe the exterior surfaces of the heater occasionally with a damp cloth (not dripping wet), using a solution of mild detergent and water. Dry the case thoroughly before operating the heater.

Caution! Do not allow water to run into the interior of the heater as this could create a fire or electric shock hazard.

4. The fan motor is factory-lubricated for life and will require no further lubrication.
5. Store the heater in a clean, dry place when it is not in use.

Cleaning the electrostatic filter

The heater has an electrostatic filter located at the rear. The cleaning of the filter should be performed once per month or as needed (when dust is visible on the filter) to ensure efficient operation of the heater.

1. Power the heater OFF by pressing the POWER button located on the left side of the Control Panel.
2. Unplug the heater's power cord.
3. Release the filter bracket by pushing the filter bracket up from below (Figure 1).
4. Remove the filter bracket by pulling down and out (Figure 2).
5. Clean the filter by vacuuming.
6. Replace the filter bracket by sliding the bottom down into the slot on the back of the heater (Figure 2). Then gently push the bottom of the filter bracket into place (Figure 1).



Figure 1

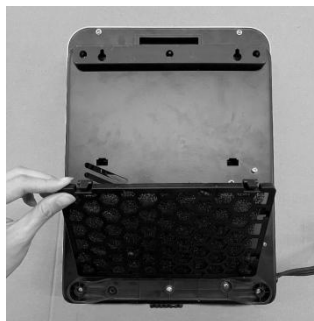


Figure 2

Warning: Any other servicing needed must be performed by an authorized service representative. Do not attempt to service the unit yourself.

Product Specifications

Model No.: DR-908W

Voltage: 120V, 60Hz

Current: Maximum continuous draw:
12.5 amps

Output: 5200 BTUs

Power: 1500 Watts

Blower: Multi-blade; Low Noise, High Pressure

Warranty Information

Register your product at our website:



Or visit [DrHeaterUSA.com/register-your-heater](https://www.DrHeaterUSA.com/register-your-heater)

Feedback

Love it? Help us make the product more for you.



Let us know with a customer review.

Please visit: <https://www.amazon.com/review/review-your-purchases#>

At Dr. Heater USA, we are committed to bringing top quality alternative & supplemental heating products to our customers.

Note: There may be a trace of smoke or odor when the unit is first operated. Do not be alarmed. This indicates a drop of oil fell on the interior coils during the manufacturing process. It will quickly evaporate and should not recur.

How long is the warranty?

This heater comes with a ONE-YEAR LIMITED COMPONENT WARRANTY. If your unit does not appear to be working properly, please contact our service center by calling 1-800-317-1688. Prior to your call, we encourage you to visit our service-related website www.DrHeaterUSA.com for troubleshooting tips and service instructions if needed.

Dr. Infrared Heater
860 Mahler Rd, Burlingame
CA 94010

Tel: 1-800-317-1688

EMAIL: SERVICE@DRHEATERUSA.COM



Dr Heater USA



@DrHeaterUSA



Dr. Heater USA



Dr. Heater USA