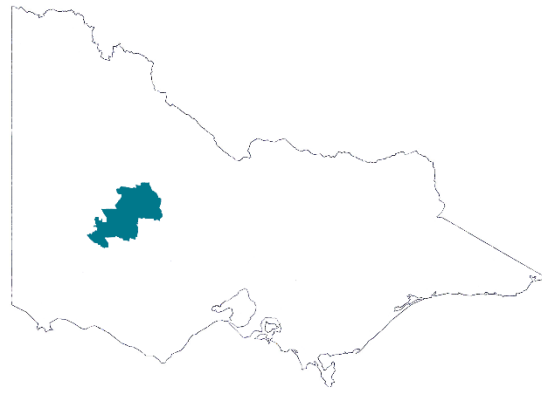


Municipal Emergency
Management Planning

Northern Grampians Shire



Municipal Fire Management Plan

2023-2026

Version 4.1, September 2023

Amendment history

Version	Date	Author(s)	Description of Change
Version 1.0	20/10/2011	NGS MFMPC	Adoption of Version 1.0.
Version 1.1	25/11/2011	J Annear	Updated to reflect amended legislation around the '10/50 Rule' and the Bushfire Management Overlay.
Version 1.2	28/01/2016	NGS MFMPC	Extension of the period of the MFMP for a further 18 months to 30/06/2016.
Version 2.0	04/07/2016	NGS MFMPC J Matthews (MFPO)	Prepared for the 2016-19 period and adopted by Council.
Version 3.0	July 2019	NGS MFMPC K Boladeras (MFPO)	General update with structural changes. Prepared for the 2019-22 period.
Version 3.1	June 2020	NGS MFMPC K Boladeras (MFPO)	General update.
Version 3.2	May 2021	NGS MFMPC K Boladeras (MFPO)	General update.
Version 4.0	June 2023	NGS MFMPC Kelly Boladeras (MFPO) Tony Miles (Commander D16)	Plan rewritten to align with changes under the <i>Emergency Management Legislation Amendment Act 2018</i> .
Version 4.1	Sept 2023	Kelly Boladeras (MFPO)	Minor amendment – change of Bushfire Place of Last Resort location in Halls Gap.

Contents

Amendment history	2
1. Introduction	5
1.1 Acknowledgement of Country	5
1.2 Plan context.....	5
1.3 Authority	5
1.4 Plan assurance and approval	6
1.5 Plan review	6
1.6 Plan audience, aim and objectives.....	6
1.6.1 Strategic direction	7
1.7 Northern Grampians Shire Municipal Fire Management Planning Committee.....	8
1.7.1 Membership of the NGS MFMP	8
1.7.2 Role of the NGS MFMP	8
2. Engagement and communications	8
2.1 Communications objectives	8
2.2 Stakeholder engagement and participation.....	8
3. Environmental profile	9
3.1 Municipal map	9
3.2 Climate and bushfire season	11
3.3 History of fire and ignition causes	11
3.4 Future fire management implications	11
4. Fire risk management strategies	12
4.1 Risk assessment methodologies.....	12
4.1.1 Analysis and prioritisation of municipal bushfire risk	12
4.1.2 Alignment to regional objectives	12
4.1.3 Treatment of municipal bushfire risk	13
4.1.4 Analysis and prioritisation of structure fire risk	14
4.1.5 Future objectives	14
4.1.6 Treatment of municipal structure fire risk	16
4.2 Localised community information.....	16
4.3 Bushfire Places of Last Resort.....	16
4.4 Strategic fire break definitions.....	17
4.4.1 Strategic Fire Suppression Lines	17
4.4.2 Fire Control Lines	17

4.4.3	Priority Egress / Access Roads (PEAR).....	17
4.4.4	General Egress / Access Roads (GEAR).....	17
4.4.5	CFA Brigade Fire Prevention Works	17
4.5	Community fire refuges.....	17
4.6	Individual bushfire risk treatments.....	18
4.6.1	Vegetation management rights	18
4.6.2	Permits to burn under the CFA Act	18
4.6.3	Permits to burn under council Local Laws.....	18
4.6.4	Inspection of private properties and issue of notices.....	19
4.6.5	Planning permits.....	19
4.7	Cross boundary arrangements	19
Appendices.....		21
Appendix A – Acronyms		21
Appendix B – Agency work plans		22
Appendix C – VFRR-B Review		23
Appendix D – Strategic fire breaks map and table.....		29
Appendix E – MFMP Terms of Reference.....		39
Appendix F – Stakeholder Analysis & Communications & Engagement Plan		43
Appendix G – Bushfire risk treatments		47
Appendix H – Structure fire risk treatments		50

1. Introduction

1.1 Acknowledgement of Country

The Northern Grampians Shire (NGS) Municipal Fire Management Planning Committee (MFMPC) acknowledges the Traditional Owners and other Aboriginal and Torres Strait Islander peoples across the Northern Grampians municipality and pays respect to Elders, past and present. Today, the municipality coincides with multiple, diverse Traditional Owner groups, including the Wotjobaluk, Jaadwa, Jadawadjali, Wergaia, Jupagulk and Dja Dja Wurrung peoples. This plan acknowledges the important role of Traditional Owners of this Country.

1.2 Plan context

This Municipal Fire Management Plan (MFMP) has been developed under legislation introduced in Victoria in 2018 to provide greater cohesion through integrated arrangements for emergency management planning in Victoria at the state, regional and municipal levels.

This plan is prepared and maintained as a sub-plan to the Municipal Emergency Management Plan (MEMP) to ensure that the linkages across fire prevention, preparedness, response and recovery programs are consistent and holistic.

This plan has been developed in line with the:

- [Emergency Management Act 2013](#) (the Act) which provides the authority under which Municipal Emergency Management Planning Committees (MEMPC) operate
- Ministerial Guidelines for Preparing State, Regional and Municipal Emergency Management Plans
- State Fire Management Planning Guidance to Regional and Municipal Fire Management Planning Committees.

This plan does not intend to override or contradict local government or individual agency plans, or legislated responsibilities of any individual agency. It is designed to complement and enhance planning undertaken at a Regional and State level within emergency management arrangements.

This plan takes an integrated approach across agencies and partners to the identification and management of fire risks within the municipality. It recognises the shared responsibility between government, agencies, business and community in reducing those risks.

1.3 Authority

In 2020, the [Emergency Management Legislation Amendment Act 2018](#) amended the [Emergency Management Act 2013](#) (the Act) to provide for new integrated arrangements for emergency management planning in Victoria at the state, regional and municipal levels. It created an obligation for a MEMPC to be established in each of the municipal districts of Victoria. Each MEMPC is a multi-agency collaboration group whose members bring organisation, industry, or personal expertise to the task of emergency management planning for the municipal district.

This plan has been prepared in accordance, and complies, with the requirements of the [Act](#) including having regard to the guidelines issued under s77, [Guidelines for Preparing State, Regional and Municipal Emergency Management Plans](#).

1.4 Plan assurance and approval

This plan has been written and endorsed by the NGS MFMP on 28 June 2023 and assured by the NGS MEMPC on 4 August 2023. A Statement of Assurance, including a checklist and certificate, was prepared and submitted to the Grampians Regional Emergency Management Planning Committee (REMPC) pursuant to the Act (s60AG).

This Plan comes into effect on date of signed approval and remains in effect until superseded by an approved and published update. Recipients should remove superseded versions from circulation.

1.5 Plan review

The MFMP acknowledges that at the time of reviewing this plan, a new MFMP template was provided by the Country Fire Authority (CFA). This version of the NGS MFMP does not reflect the changes in the new template. However, the MFMP is committed to working collaboratively towards further improvements to this plan including consideration of the new template.

To ensure the plan provides for a current integrated, coordinated, and comprehensive approach to emergency management and is effective, it is to be reviewed at least every three years or as required.

MFMP member agencies and organisations will have the opportunity to participate in relevant emergency exercises during the three-year plan review period.

Urgent update of this plan is permitted if there is significant risk that life or property will be endangered if the plan is not updated (the Act s60AM). Urgent updates come into effect when published on the municipal council website and remain in force for a maximum period of three months.

Administrative updates will be made to this plan from time to time that will be noted in the [Amendment history](#). Administrative amendments do not substantially change the content or intent of this plan, and do not require the Plan to be endorsed by the MEMPC.

This plan is available on council's website: www.ngshire.vic.gov.au.

All comments regarding this plan should be forwarded to:

MEMPC Chair
Northern Grampians Shire Council
PO Box 580
Stawell Vic 3380

1.6 Plan audience, aim and objectives

The NGS MFMP is intended for the use of the members of the NGS MFMP, NGS MEMPC and the Grampians REMPC.

This plan takes an integrated approach across agencies and partners to the identification and management of fire risks within the municipality. It recognises the shared responsibility between government, agencies, business, and community in reducing those risks.

The NGS MFMP seeks to achieve consistent and effective fire management planning within the municipality through commitment and cooperation, including sharing and building of collective knowledge and experience at municipal and regional levels.

The primary aim of the MFMP is to create greater community awareness and communicate fire management information more effectively. Ultimately, the community will share responsibility for implementing the strategies contained within the plan and create a safer municipality through undertaking the following tasks.

- Ensure that plans and actions are in place (and that responsible authorities are advised of actions which the Committee deems necessary) for minimising the risk of an outbreak of fire or for suppressing any fire that may occur within the area (*Section 55* of the [CFA Act 1958](#)).
- Develop programs that are relevant to the community.
- Measure fire safety outputs to assess the reduction in community vulnerability to fire.
- Engage community groups and businesses in ongoing dialogue about fire mitigation solutions including fire prevention activities.
- Liaise with other agencies and committees to ensure integration and consistency of purpose.

The primary objectives of the NGS MFMP are to:

- Effectively manage and reduce the risk of fire, with a view to protecting life and property and with due regard to our natural environment; and
- Align and integrate existing fire management planning and practices across agencies and the community.

The NGS MFMP is a strategic and operational document that identifies communities and assets at risk through an Environmental Risk Scan incorporating the existing NGS MFMP and MEMP, using the Victorian Fire Risk Register (VFRR) tool to identify assets at risk from bushfire and treatments currently applied to mitigate risk.

1.6.1 Strategic direction

This plan addresses both public and private land across all emergency management phases. The MFMP will be reviewed and updated annually to ensure it incorporates any new strategies, programs and tools developed to meet the needs and expectations of agencies, organisations, and the community. Adopting the principles of continuous improvement, the strategic direction of the MFMP aligns directly to the State Emergency Management Plan – Bushfire Sub-Plan (2021) which articulates the following guiding principles.

- Leadership
- Protection of human life
- Responsibility for building resilience
- Community involvement
- A seamless approach
- Risk-driven

- Learning and knowledge

1.7 Northern Grampians Shire Municipal Fire Management Planning Committee

1.7.1 Membership of the NGS MFMPC

Core membership of the NGS MFMPC, as appointed by the MEMPC, comprises representatives from the following key agencies and organisations as per the Committee's Terms of Reference ([Appendix E](#)).

- Northern Grampians Shire Council (NGSC)
- Country Fire Authority (CFA)
- Forest Fire Management Victoria (FFMV)
- Victoria Police
- Department of Transport (DOT)
- Grampians Wimmera Mallee Water (GWMWater)

1.7.2 Role of the NGS MFMPC

The role of the Committee, along with developing the MFMP, is to provide a local level forum to build and sustain organisational partnerships, generate a common understanding and shared purpose with regard to fire management, ensure that the plans of individual agencies are linked and complement each other, and to collectively achieve a reduction in fire risk to the municipal community. For more detail on the functions of the NGS MFMPC, refer to the Committee's Terms of Reference ([Appendix E](#)).

2. Engagement and communications

2.1 Communications objectives

The achievement of fire management objectives and the success of fire management outcomes will be dependent on effective communications in all planning and implementation phases. The objectives of the communications plan will be to:

- Build a collaborative approach to integrated fire management
- Identify internal communication flows within organisations
- Ensure that communication across agencies is effective in developing a shared understanding of the issues and key responsibilities and that all agencies deliver a consistent message to the community and their stakeholders
- Build resilient relationships and sound networks between key stakeholders
- Consult with communities so that local knowledge is captured in the planning process that the communications plan supports
- Foster better communication and planning between the agencies and local communities
- Achieve greater consistency from all levels of government on key policy issues.

2.2 Stakeholder engagement and participation

Stakeholder engagement and participation is an essential element of fire management planning. Stakeholders are required to participate for a range of reasons, including (but not limited to):

- Legislative fire management responsibilities
- Leadership
- Provision of hazard expertise and technical advice
- Subject to hazard impact – directly and/or indirectly
- Land tenure and management arrangements
- Expressed expectation
- Influence and / or support mitigation.

The aim is for all stakeholders to participate in the collaborative development, delivery, and monitoring of the MFMP. Engaging with stakeholders in the development and implementation of the MFMP is an essential tool for drawing on existing knowledge and experience and to build support for and involvement in this plan.

Communication and engagement tasks are guided by the International Association for Public Participation (IAP2) Public Engagement Spectrum (Figure 1), which is a framework for planning effective communication and engagement on any issue or plan.

Inform	Consult	Involve	Collaborate	Empower
Provide balanced information to stakeholders	Obtain feedback on analysis and decisions	Work directly together to ensure issues are understood	Partner in each aspect of decision making	Place final decision making in the hands of primary stakeholders

Figure 1 The IAP2 Public Engagement Spectrum

To support this plan, a Stakeholder Analysis and Communications and Engagement Plan have been developed and are included in [Appendix F](#).

3. Environmental profile

3.1 Municipal map

The Northern Grampians Shire lies northeast of the Grampians National Park (Gariwerd), between the cities of Ballarat, Bendigo and Horsham. The municipality covers an area of 5,918 square kilometres.

Council’s public [mapping portal](#) provides information on emergency services, bus routes, and vulnerable facilities. Council’s internal map layers can also provide locations of strategic fire breaks, hydrants, and tanks. Mapping is available through the Municipal Emergency Management Officer. The map below (Figure 3) details the municipal area.

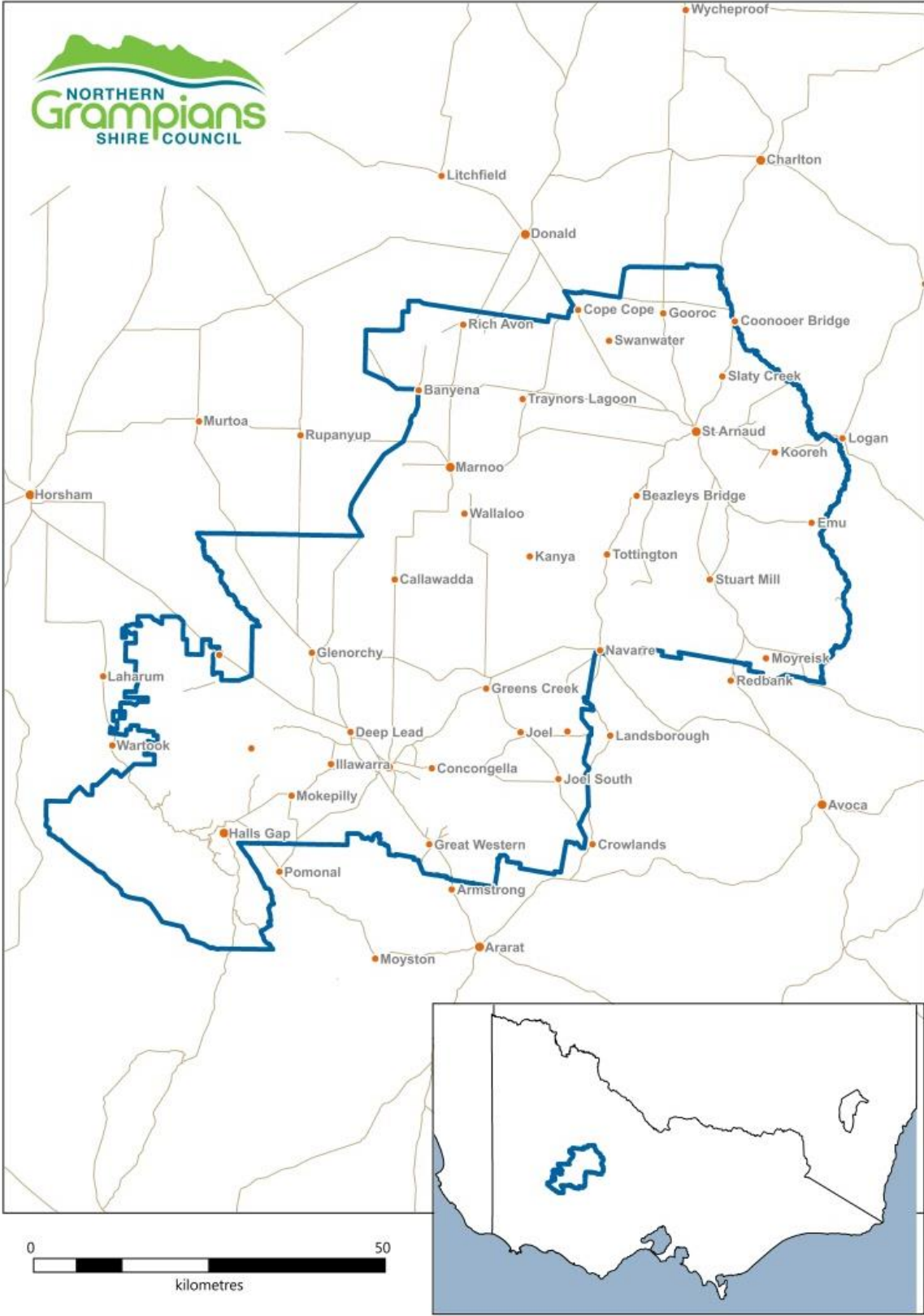


Figure 2: NGS municipal map.

3.2 Climate and bushfire season

The climate in the Grampians region is dominated by warm dry summers and cool wet winters, with most rainfall occurring in winter and spring. The bushfire season generally runs from December to April.

Prevailing weather conditions associated with the bushfire season in the Northern Grampians Shire are warm to hot north westerly winds accompanied by high temperatures and low relative humidity followed by a cool south westerly change.

[Climate change projections](#) for the Grampians region include harsher fire weather and longer fire seasons. Fire weather is a measure of fuel dryness and hot, dry, windy conditions. An increase in frequency of very high and extreme fire danger days is projected.

The impacts of climate change need to be continually monitored and the MFMP reviewed accordingly to ensure that seasonal fire risk is addressed appropriately.

3.3 History of fire and ignition causes

Historically, Northern Grampians Shire experiences a major fire once every five to ten years. This is partially due to the municipality being situated in a known lightning belt and agricultural activities including stubble burning practices. Often ignitions occur in remote and difficult to access terrain, allowing the fire to gain momentum.

Aging buildings, buildings with shared roof space, and elderly housing stock present a higher fire risk to occupants and residents due to the nature of their construction and the materials used.

Major interstate and national transport links traverse the municipality. These have led to the ignition of fires from transport accidents and malfunctions. This characteristic also presents a major risk for hazardous material incidents.

3.4 Future fire management implications

Future vulnerabilities include increased larger landholdings managed by consortiums and serviced by contractors, leading to declining populations in broadacre cropping areas. This demographic combined with an aging population has seen previously robust rural communities relocate to more populated centres. This shift in population could potentially lead to delayed suppression activities in rural areas.

The installation of the Bulgana Green Power Hub wind farm east of Stawell presents an additional potential source of fire risk. The wind farm is also a large asset requiring protection which would impact local resources in the event of a fire.

An emerging trend in line with the green movement is the introduction of Electric Vehicles (EVs) globally. In Victoria, the Government has set a Zero Emission Vehicle target that by 2030, 50% of all new light vehicle sales will be EV's. This could have implications in the Fire Management Sector with a dramatic increase in Lithium Ion (Li ion) battery use, charging stations in residential premises and outside commercial ventures. Li ion battery fires are an emerging risk to fire response agencies and with a main transportation highway running through the shire, it would be expected that EV fires may occur.

A further push is being made to increase the number of solar panels and Battery Energy Storage Systems (BESS) in residential properties. The bulk installation of li ion batteries to store energy presents new challenges to fire managers.

An increase in individuals purchasing land for rest and relaxation purposes has resulted in more absentee landowners, particularly in the Halls Gap area. These landowners traditionally have less knowledge of fuel and fire management requirements, little engagement with the community, and live externally to the municipality. This limits their capacity and ability to undertake regular fuel management work and participate in local community networks.

Changes in the use of controlled fire management practices on public land may lead to changes in vegetation characteristics and its dependence on fire.

Large, privately owned areas of remnant vegetation present additional fire management challenges as the owners may not have the capacity to undertake appropriate fuel management works for a variety of reasons, including access to knowledge and resources and legislative constraints.

Enforcement of compliance also presents complexities in terms of cost recovery and allocation of resources for management agencies.

4. Fire risk management strategies

4.1 Risk assessment methodologies

4.1.1 Analysis and prioritisation of municipal bushfire risk

To determine the bushfire risk within NGS, assessment was undertaken using the environments contained within the VFRR process. The VFRR application is a systematic process that identifies assets at risk from bushfire and assesses their level of risk on a consistent state-wide basis using ISO 31000:2009 Risk Management. The VFRR data provided the starting point to assess the effectiveness of existing treatments and determine residual risk levels for the purpose of developing further mitigation treatments as required.

4.1.2 Alignment to regional objectives

The plan also references treatments for the six priority risks in relation to bushfire as determined by the Grampians Regional Strategic Fire Management Plan (RSFMP) using the VFRR risk assessment process (Table 1). These are aligned to the asset classes and subclasses contained within the VFRR tool (administered by the CFA).

Table 1 Bushfire Priority and VFRR Asset Classes and Subclasses

Bushfire		
Grampians RSFMP Priority	VFRR Asset Class	VFRR Asset Subclass/es
1. Urban Interface	Human Settlement	<ul style="list-style-type: none"> Residential Other Special Fire Protection
2. Power Supply	Economic	<ul style="list-style-type: none"> Agriculture

<p>3. Communications</p> <p>4. Water Supplies & Catchments</p> <p>5. Transport</p>		<ul style="list-style-type: none"> • Commercial • Infrastructure • Tourist & recreational • Mines • Commercial forests • Water catchments
<p>6. Natural Environment</p>	<p>Environmental</p>	<ul style="list-style-type: none"> • Locally Important • Endangered • Vulnerable
	<p>Cultural Heritage</p>	<ul style="list-style-type: none"> • Aboriginal Significance • Non-Indigenous

4.1.3 Treatment of municipal bushfire risk

In developing this plan, the MFMP has considered the State strategic control priorities as the municipal fire management priorities. They are:

- Protection and preservation of life is paramount - this includes safety of emergency services personnel, and safety of community members including vulnerable community members and visitors/tourists located within the incident area.
- Issuing community information and community warnings detailing incident information that is timely, relevant, and tailored to assist community members make informed decisions about their safety.
- Protection of critical infrastructure and community assets that supports community resilience.
- Protection of residential property as a place of primary residence.
- Protection of assets supporting individual livelihoods and economic production that supports individual and community financial sustainability.
- Protection of environmental and conservation values that considers the cultural, biodiversity, and social values of the environment.

Following the State strategic control priorities, the MFMP aims to reduce the number and severity of fires within the municipality with the intent of creating a more fire resilient community.

The State strategic control priorities inform and are integrated into the primary fire risk management strategies used in this plan, which are as follows.

- Community education and engagement.
- Hazard reduction.
- Preparedness.
- Regulatory controls.

There are several state-wide and municipal treatments that have been identified for each fire risk management strategy, which can be used by agencies to reduce the risk and effects of fire on the community. The generic state-wide and municipal wide treatments include the following.

- Community education programs.

- Community education and engagement activities.
- Public awareness – multimedia communications.
- Powerline hazard tree identification, management, and reporting.
- Fire hazard inspection program and issue of notice.
- Compliance and enforcement of legislation.
- Bushfire Management Overlays.
- Building Code of Australia.
- Permits to Burn.
- Local Laws.

To effectively reduce community vulnerability to fire requires more than inter-agency effort alone. It requires the facilitation of a more self-reliant and self-aware community who have the knowledge, motivation and capacity to manage the risks to reduce the threat of fire in their own communities as an active partner with fire management agencies.

The key objectives and outcomes sought through the implementation of the primary fire risk management strategies for bushfire are outlined in [Appendix G](#).

In addition, there are a range of site-specific plans to reduce specific risks within the municipality that are required by other legislation.

4.1.4 Analysis and prioritisation of structure fire risk

The definition of structure fire is any uncontrolled fire inside, on, under or touching a building or structure that needs to be extinguished.

This Plan recognises that there is currently no Risk Assessment Tool for structure fires. Once an appropriate Risk Assessment Tool has been developed (at state level), this will be implemented by the MFMP to complete and incorporate a full Risk Register for structure fires in later iterations of this Plan.

Risk assessment will consider likelihood factors, such as structural fire history (number and type) across the municipality and across the relevant industry, and the consequences, or potential consequences of those occurrences (death, injury, economic and property loss statistics).

Consideration will also be given to high-risk premises and assets. Examples of high-risk premises may include (for life risk) nursing homes, aged care facilities and institutional care facilities, (and for property loss risk) commercial and industrial premises.

4.1.5 Future objectives

Priority risks for structure fires within NGS have mostly been defined. The tables below identify possible Asset Sub Classes aligned to the VFRR Asset Classes which would need to be considered in the development of future risk assessment tools for these risk environments (Tables 6 & 7).

Structural assets have not yet been assessed or prioritised. Additionally, current treatments for these structure risks are yet to be identified.

Table 2 Proposed Structure Fire Asset Sub Classes

Structure Fire		
Grampians RSFMP Priority	VFRR Asset Class	Proposed Asset Subclass/es
1. Houses 2. Accommodation 3. Places of public gathering 4. Infirm, assisted living	Human Settlement	<ul style="list-style-type: none"> • Residential <ul style="list-style-type: none"> ○ High density ○ Urban ○ Interface living ○ Rural ○ Short term accommodation • Public Assembly <ul style="list-style-type: none"> ○ Entertainment & leisure venues ○ Institutions • Healthcare <ul style="list-style-type: none"> ○ Hospitals & medical centres ○ Nursing homes ○ Special care accommodation ○ Day care centres ○ Hostels/hospices
5. Retail 6. Commercial businesses 7. Industrial 8. Infrastructure	Economic	<ul style="list-style-type: none"> • Commercial & industrial <ul style="list-style-type: none"> ○ Business centres ○ Shopping centres ○ Industrial complexes • Agricultural & farming • Transport <ul style="list-style-type: none"> ○ Road ○ Rail ○ Marine ○ Air
To be defined	Environmental	<ul style="list-style-type: none"> • Eco tourism venues • Flora parks & reserves • Fauna parks & reserves
9. Buildings of significant heritage or cultural value	Cultural Heritage	<ul style="list-style-type: none"> • Indigenous structures • Heritage listed structures • Locally significant structures

4.1.6 Treatment of municipal structure fire risk

The key objectives and outcomes sought through the implementation of the primary fire risk management strategies for structure fires are outlined in [Appendix H](#).

4.2 Localised community information

Community Information Guides were developed in response to the Victorian Bushfire Royal Commission as a tool to support councils with local bushfire planning for communities at risk. With changing communities and needs the CFA has modernised this resource and the information is now available online as part of CFA Local: <https://www.cfa.vic.gov.au/home/local-information>.

Local information includes the details of all Bushfire Places of Last Resort (BPLRs) (also known as Neighbourhood Safer Places) within the map area; any planned CFA events: the local government area; CFA Brigade; a 4-day Fire Danger Rating forecast; Total Fire Ban information; Community meetings planned; and links to additional information.

In September 2022, the new Australian Fire Danger Rating System was implemented to achieve a simplified and nationally consistent system. The new Fire Danger Ratings are shown below. The CFA website contains information regarding the new system: www.cfa.vic.gov.au.

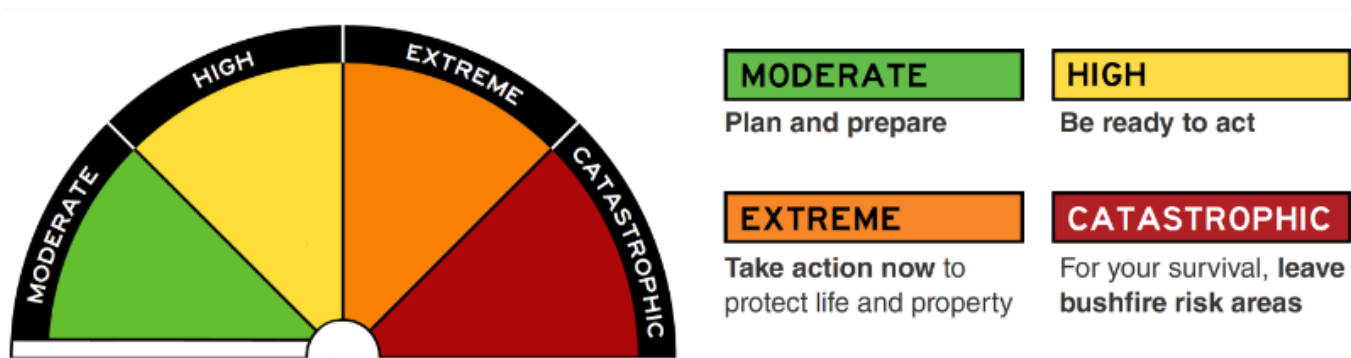


Figure 3 The Australian Fire Danger Rating System.

4.3 Bushfire Places of Last Resort

Bushfire Places of Last Resort (BPLRs) are council designated locations within the community that may provide some protection from a bushfire, but do not guarantee safety. BPLRs are existing locations and not purpose-built fireproof structures.

BPLRs are not designed to replace a personal bushfire survival plan. BPLRs may assist people when there is an imminent threat of bushfire and they have no plan, or their planned options are not possible.

They are *not* locations to relocate to when leaving early. On days when there is advice to leave early people should relocate to an appropriately distant area of lower risk as early as possible.

BPLR sites are nominated by the council and assessed annually by CFA for suitability. Northern Grampians Shire BPLRs are located at the following sites.

- Stawell - Cato Park, Victoria Street (opposite Haitts Lane)
- St Arnaud - Lord Nelson Park Oval, Dunstan Street (off Charlton-St Arnaud Road)
- Halls Gap - Halls Gap Picnic Reserve, Grampians Road (opposite petrol station)

These locations can be viewed on council's [Community Map](#).

4.4 Strategic fire break definitions

4.4.1 Strategic Fire Suppression Lines

Vegetation managed from fence line to fence line where practicable. Grass will be slashed to a height of 100mm or less, and elevated fine fuels will not surpass a 'high' fuel hazard rating as assessed in the Victorian Government's [Overall Fuel Hazard Assessment Guide 2010](#).

4.4.2 Fire Control Lines

Vegetation managed 3 metres behind the guideposts where practicable. Vegetation will be slashed to a height of 100mm or less.

4.4.3 Priority Egress / Access Roads (PEAR)

The primary function of PEAR will be to determine what treatments are required along the nominated road to maintain access and egress to an isolated community prior to or after a bushfire event. All priority roads in the municipality will be assessed and treated in accordance with the Victorian Government's [Road Bushfire Risk Assessment Guideline 2013](#).

4.4.4 General Egress / Access Roads (GEAR)

Roads deemed important for emergency vehicles and community access and egress during a fire. The treatment for a GEAR is the same as for a Fire Control Line.

4.4.5 CFA Brigade Fire Prevention Works

Brigade works may enhance Strategic Fire Suppression Lines and Fire Control Lines however, the implementation is not compulsory and will be subject to seasonal conditions and Brigade resource availability.

4.5 Community fire refuges

Community Fire Refuges are purpose-built or modified buildings that provide protection from radiant heat and embers. They are designed to be a last resort option where nearby residents or visitors can seek shelter if they are trapped by a significant fire.

There are no designated Community Fire Refuges in the Northern Grampians Shire. For information on the location of Community Fire Refuges in Victoria, go to the [CFA website](#).

4.6 Individual bushfire risk treatments

4.6.1 Vegetation management rights

In November 2011, the Victorian Government introduced permanent planning controls as part of implementing the recommendations of the Victorian Bushfire Royal Commission.

In December 2017, the Victorian Government introduced changes to the Native Vegetation controls under Clause 52.17 of the Planning Scheme.

Planning permit exemptions for 'Fire Protection' have been included in Victoria's planning schemes to enable residents to manage vegetation for bushfire protection around their property.

Other exemptions to assist the landowner include the following.

- Fencing - (minimum extent necessary) for the operation or maintenance of an existing fence, or the construction of a boundary fence between properties in different ownership (with consent from the neighbouring landowner).
- Existing buildings - (minimum extent necessary) for the maintenance of a building but does NOT apply to native vegetation more than 10m from a building and does NOT apply to a property which has the Vegetation Protection Overlay control.
- Emergency works - in the case of an emergency by, or on behalf of, a public authority or municipal council to create an emergency access associated with emergency works; or where it presents an immediate risk of personal injury or damage to property. Only that part of the vegetation that presents the immediate risk may be removed, destroyed, or lopped under this exemption.

To determine if you need a planning permit for native vegetation removal, please contact the planning department. To determine if your property is within the Bushfire Management Overlay, visit <https://www2.delwp.vic.gov.au/maps/maps-and-spatial-data>.

4.6.2 Permits to burn under the CFA Act

During the declared Fire Danger Period, limited permits may be obtained by individuals to conduct a fuel reduction or stubble burn within the municipality. These permits are issued by the CFA (District 16) under the authority of the [CFA Act 1958](#). These permits contain stringent conditions that must be complied with. Refer to [Fire Permits | CFA \(Country Fire Authority\)](#)

4.6.3 Permits to burn under council Local Laws

Under council's General Local Law 2022, outside the declared Fire Danger Period, within a residential, commercial or industrial area a person must not, without a permit, burn in the open air any material, substance or thing in a heap that exceeds the size of 1 cubic metre. A permit is not required if the fire is being used for heating, cooking, cultural or social purposes, or if it is generated by a tool of trade while being used for the purpose for which it was designed.

4.6.4 Inspection of private properties and issue of notices

The NGSC will conduct fire hazard inspections within the municipality, concentrating on high-risk areas. Fire prevention notices will be issued on land considered to be a fire risk as soon as practicable after the declaration of the Fire Danger Period.

4.6.5 Planning permits

When applications are lodged with NGSC for permits under the *Planning and Environment Act 1987* for the subdivision of land or the construction of buildings in areas of high fire risk, council may consider the following documents in determining any such application and refer the application to the relevant fire agencies for comment.

- Northern Grampians Planning Scheme - State and Local Planning Policies.
- Clause 44.06 Bushfire Management Overlay.
- Clause 52.07 Bushfire Recovery.
- Clause 52.10 Reconstruction After an Emergency.
- Clause 52.12 Bushfire Protection – Exemptions.
- Clause 52.14 2009 Bushfire - Replacement Buildings.
- Clause 53.02 Bushfire Planning.
- State Govt (Planning) website - Bushfire Management Overlay.
- CFA website - Planning and Bushfire Management Overlay.
- Other documentation if required.

For further information on any of the above, please contact council’s Planning department.

4.7 Cross boundary arrangements

The NGS MFMP seeks to ensure risk environments that cross municipal and regional boundaries are treated in a seamless manner with regard to risk assessment and treatments. This is achieved through a collaborative approach and the use of consistent processes and tools.

The Northern Grampians municipal area borders Buloke, Central Goldfields, Horsham Rural City, Pyrenees, Ararat Rural City, Southern Grampians and Yarriambiack Shires. It is the shared responsibility of these MFMPs to ensure that risks contiguous across these borders are consistently planned for.

Clear links to existing organisational cross-boundary agreements and Memorandums of Understanding (MOU) between agencies dealing with preparedness, preparation, response and recovery activities and resource allocation arrangements are also vital.

Current identified cross boundary and contiguous risk from bushfire for the NGS municipal area includes:

Table 3 Northern Grampians Shire cross boundary risks.

Risk	Adjacent Municipality	Strategy
Grampians National Park	Ararat Rural City, Horsham Rural City, Southern Grampians Shire	Ensure alignment of planning and prevention activities in relation to these risks are

Ararat Regional Park (Dunneworthy Block)	Ararat Rural City	discussed and coordinated with relevant municipalities. Ensure that these arrangements and plans are included in relevant MFMPs.
Kara Kara National Park	Pyrenees Shire	

It is also recognised that agencies and municipalities have existing planning relationships across multiple boundaries and that these planning arrangements need to be considered when developing future plans.

Appendices

Appendix A – Acronyms

ARTC	Australian Rail Track Corporation
AV	Ambulance Victoria
BESS	Battery Energy Storage System
BPLR	Bushfire Place of Last Resort
CFA	Country Fire Authority
DEECA	Department of Energy, Environment & Climate Action
DET	Department of Education & Training
DFFH	Department of Families, Fairness & Housing
DoH	Department of Health
DOT	Department of Transport
EPA	Environment Protection Authority
ERV	Emergency Recovery Victoria
EMV	Emergency Management Victoria
EV	Electric Vehicle
FFMV	Forest Fire Management Victoria
GEAR	General Access / Egress Road
GWMWater	Grampians Wimmera Mallee Water
IAP2	International Association for Public Participation
MEMP	Municipal Emergency Management Plan
MEMPC	Municipal Emergency Management Planning Committee
MFMP	Municipal Fire Management Plan
MFMPC	Municipal Fire Management Planning Committee
MFPO	Municipal Fire Prevention Officer
NGS	Northern Grampians Shire
NGSC	Northern Grampians Shire Council
PEAR	Priority Egress / Access Road
RDV	Regional Development Victoria
REMPC	Regional Emergency Management Planning Committee
RSFMP	Regional Strategic Fire Management Plan
The Act	<i>Emergency Management Act 2013</i>
VCC-EM	Victorian Council of Churches – Emergencies Ministry
VICSES	Victoria State Emergency Service
VFRR	Victorian Fire Risk Register
WCMA	Wimmera Catchment Management Authority

Appendix B – Agency work plans

Agency	Plan	Review schedule
CFA / DEECA / FFMV / Parks Victoria	Joint Fuel Management Plan	Annual
Department of Transport	Grampians Region Fire Prevention Plan 22-23	Annual
GWMWater	Emergency Management Plan CMS/2690	Every three years
NGSC	Strategic Fire Breaks Table (see Appendix D of this plan)	Annual
Powercor	Bushfire Mitigation Plan	Annual
Powercor	Electric Line Clearance Management Plan	Annual
VicTrack	Annual Fire Prevention Program – Stawell & St Arnaud	Annual

Appendix C – VFRR-B Review



Northern Grampians Shire Victorian Fire Risk Register - Bushfire (15.11.2022)

Asset ID	Asset Class	Asset Subclass	Asset Name	Location	Land Manager	Risk Rating
65602	Cultural Heritage	Non-Indigenous	Seppelts Champagne Cellars	Moyston Great Western RD	Private	High
65607	Cultural Heritage	Non-Indigenous	Heatherlie (Mt Difficult) Quarry	Heatherlie 4WD RD	Other	TBC
65611	Cultural Heritage	Non-Indigenous	St Peters Anglican Church	Dunolly RD	Other	TBC
65616	Cultural Heritage	Non-Indigenous	Former Pleasant Creek Court House	Little Seaby Lane	Other	High
65605	Cultural Heritage	Non-Indigenous	Stawell Court House	Patrick Street	Other	High
65613	Cultural Heritage	Non-Indigenous	Tottington Homestead Woolshead	Ararat St Arnaud RD	Other	TBC
65614	Cultural Heritage	Non-Indigenous	Hard Hill Mining Site	Hard Hill	Other	TBC
65612	Cultural Heritage	Non-Indigenous	Lloyds Whip Gold Mining Site	Sunraysia HWY	Other	TBC
65617	Cultural Heritage	Non-Indigenous	Former Literary and Scientific Institute	Longfield Road	Other	High
65606	Cultural Heritage	Non-Indigenous	Ledcourt Homestead		Other	TBC
65615	Cultural Heritage	Non-Indigenous	Former Police Superintendents Residence	Griffiths Road	Other	High
6554042	Cultural Heritage	Non-Indigenous	Best's Wines	111 Best Road, Great Western	Private	High
65235	Economic	Commercial Forest	Hardwood Plantations	Northern Grampians	Private	Very High
65206	Economic	Infrastructure	Stawell Zone Substation	Western HWY Stawell	Private	High
65213	Economic	Infrastructure	Stawell WTP	Crowlands RD Stawell	Water Authority	High
65210	Economic	Infrastructure	Marnoo WPS	Newell ST Marnoo	Water Authority	Medium
65238	Economic	Infrastructure	Glenorchy Flow and Flood Gauge	Giles River RD Glenorchy	Water Authority	Medium
65220	Economic	Infrastructure	Halls Gap WTP	Tymna DR Halls Gap	Water Authority	High
65221	Economic	Infrastructure	Mt Zero Mobile Base Station	Mt Zero Grampians NP	Private	Medium
65239	Economic	Infrastructure	Glynwylln Flood and Flow Gauge	Greens Creek RD Greens Creek	Water Authority	High
65217	Economic	Infrastructure	Halls Gap Mobile Base Station	Grampians NP Halls Gap	Private	Medium
65214	Economic	Infrastructure	Stawell Airport	Aerodrome RD Stawell	Private	High

65219	Economic	Drinking Water Catchment	Lake Bellfield Water Catchment	Grampians National Park	Other	Low
65212	Economic	Infrastructure	Stawell City Gas Gate	Stawell Avoca RD Stawell	Private	Medium
65209	Economic	Infrastructure	Saint Arnard WTP	Saint Arnard SF	Water Authority	High
65224	Economic	Mine	Stawell Gold Mines	Stawell	Private	Extreme
65216	Economic	Drinking Water Catchment	Lake Wartook Water Catchment	Grampians National Park	Other	Low
65225	Economic	Commercial	Frew Stall Abattoir	Stawell	Private	Low
65208	Economic	Infrastructure	Saint Arnaud WPS 2	McQueen RD Saint Arnaud	Water Authority	High
65215	Economic	Infrastructure	Great Western WTP	North Great Western	Water Authority	High
65211	Economic	Infrastructure	Glenorchy WPS	Phillips RD Glenorchy	Water Authority	Medium
65237	Economic	Tourist & Recreational	Stawell Gift	Stawell	Private	Low
65218	Economic	Infrastructure	Halls Gap Communications Tower	Halls Gap	Private	Medium
65207	Economic	Infrastructure	Saint Arnaud WPS	Reservoir RD Swanwater	Water Authority	Low
65236	Economic	Tourist & Recreational	Brambuk Aboriginal Cultural Centre	Halls Gap South	Other	Medium
6550092	Economic	Tourist & Recreational	Halls Gap Festivals	Halls Gap	Private	Medium
6551829	Economic	Infrastructure	Lake Bellfield Outlet and Pipeline Works	Lake Bellfield	Private	Very High
6551830	Economic	Infrastructure	Dairy Creek	Sundial RD Dairy Creek	Private	Medium
6551831	Economic	Infrastructure	Stawell Weir	Grampians RD Stawell	Private	Medium
6551832	Economic	Infrastructure	Lake Fyans	Mokepilly RD Lake Fyans	Private	High
6551833	Economic	Infrastructure	Halls Gap Bore 1	Reids LN and Thryptomene CRT	Private	Medium
6551835	Economic	Infrastructure	Dad and Dave Weir	Mt Victory RD Zumsteins	Private	Medium
6551836	Economic	Infrastructure	Lake Wartook Outlet Works	Wartook RD Wartook Reservoir	Private	Medium
6551837	Economic	Infrastructure	Fyans Radial Gates	Fyans Creek RD Fyans Creek	Private	Medium
6551838	Economic	Infrastructure	Lonsdale Lake	Lake Lonsdale	Private	Medium
6551839	Economic	Infrastructure	Ledcourt PH Correction PRV Station	CNR School RD and Delahunty RD Ledcourt	Private	Medium
6552640	Economic	Infrastructure	Stawell Aerodrome Automatic Weather Station		Private	High
6552725	Economic	Infrastructure	Moora Moora Outlet Works	Glenelg River Road	Private	Very High

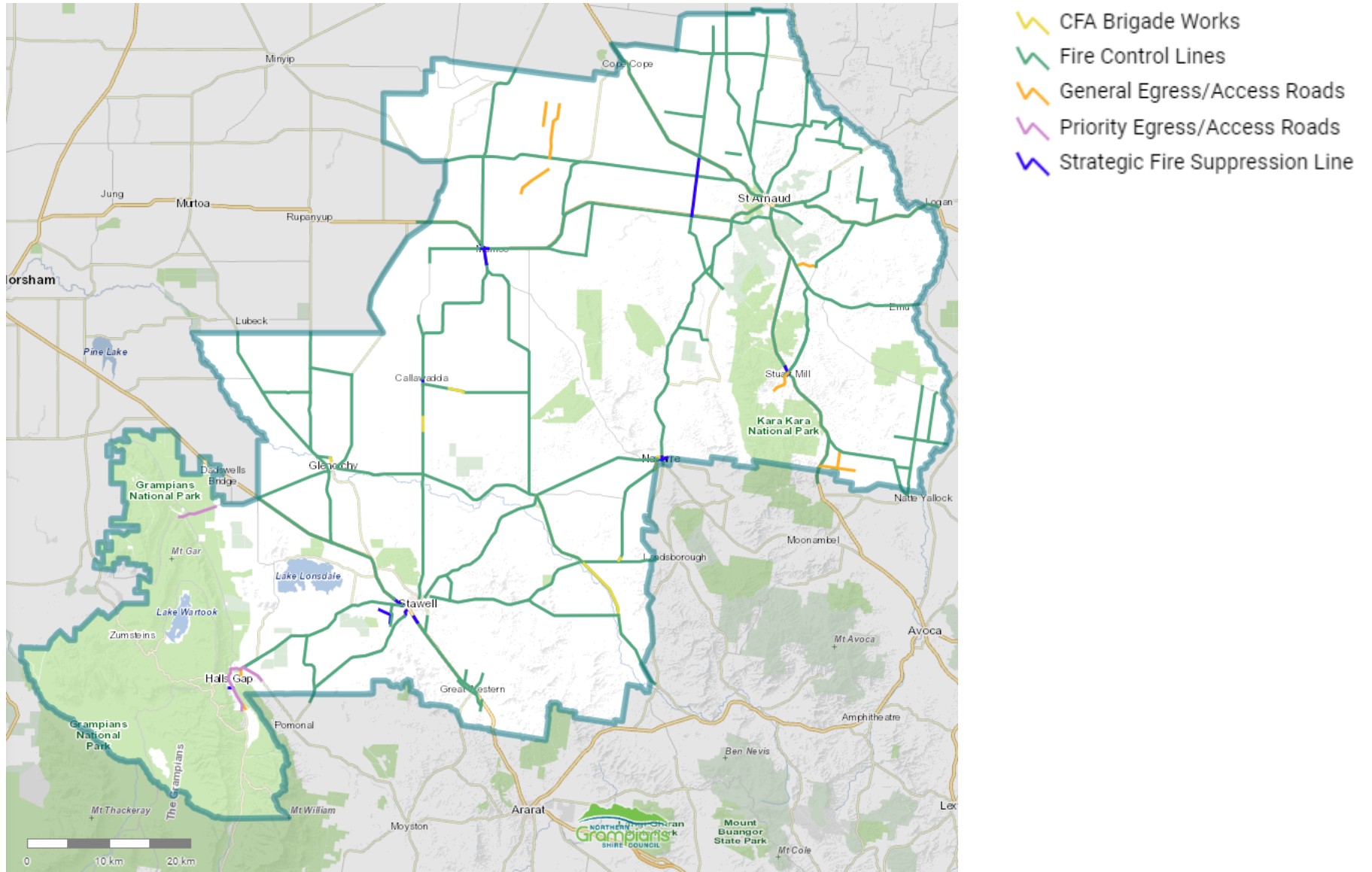
6552726	Economic	Infrastructure	Stawell WWTP	30 Hines RD Stawell	Private	High
6552727	Economic	Infrastructure	St Arnaud WWTP	51 McRoberts RD St Arnaud	Private	High
6552728	Economic	Infrastructure	Marnoo PRV Control Valve Station	Wimmera HWY Marnoo	Private	Medium
6552807	Economic	Infrastructure	Glenorchy CEV	Old Glenorchy-Stawell RD	Private	High
6553105	Economic	Infrastructure	Dadswell Bridge mobile site	Western HWY Dadswells Bridge	Private	Medium
6553106	Economic	Infrastructure	Glenorchy 3G mobile site	Glenorchy and Campbells RD Glenorchy	Private	Medium
6553107	Economic	Infrastructure	Stawell mobile site	Big Hill Lookout Stawell	Private	High
6553108	Economic	Infrastructure	Great Western mobile site	Moyston RD Great Western	Private	Medium
6553109	Economic	Infrastructure	St Arnaud mobile site	Tower Hill St Arnaud	Private	Medium
6553110	Economic	Infrastructure	Stuart Mill mobile site	Sunraysia HWY Stuart Mill	Private	Medium
6553111	Economic	Infrastructure	Navarre mobile site	Cambridge ST and St Arnaud- Ararat RD Navarre	Private	Medium
6554034	Economic	Infrastructure	Bulgana Green Power Hub & Battery Energy Storage System (BESS)	Joel Joel	Private	Very High
6554035	Economic	Commercial	Frew Foods International	46 Abattoirs Road, Stawell	Private	Extreme
6554036	Economic	Infrastructure	Gilmac Hay Processing Facility	3763 Charlton Road, St Arnaud	Private	High
6554037	Economic	Infrastructure	Grain Silos	Marnoo	Private	High
6554038	Economic	Infrastructure	Marnoo Communications Tower	Marnoo	Private	Very High
6554039	Economic	Infrastructure	Studall Rd Communications Tower	Wallaloo East	Private	Very High
6554040	Economic	Infrastructure	Wallaloo E Rd Communications Tower	356 Wallaloo Hall Road, Wallaloo	Private	Very High
65233	Economic	Infrastructure	Western HWY	Northern Grampians	VicRoads	High
65229	Economic	Infrastructure	Horsham - Stawell 66KV Sub-transmission Line 1	Horsham to Stawell	Private	Very High
65203	Economic	Infrastructure	Mildura Rail Line	Northern Grampians	Rail Authority	High
65205	Economic	Infrastructure	Ararat - Stawell 66KV Sub-transmission Line	Ararat to Stawell	Private	Very High
65204	Economic	Infrastructure	ARTC	Melbourne to SA	Rail Authority	Very High

65232	Economic	Infrastructure	Stawell - Halls Gap 22KV Distribution Feeder Line	Stawell to Halls Gap	Private	High
65230	Economic	Infrastructure	Horsham - Stawell 66KV Sub-transmission Line 2	Horsham to Stawell	Private	Very High
65222	Economic	Infrastructure	BATS-HOTS 220KV Transmission Line	Ballarat to Horsham	Private	High
6554041	Economic	Tourist & Recreational	Grampians Peak Trail	Mount Difficult Range	LGA	High
65014	Human Settlement	Residential	Stawell South and London Road	Stawell	Private	High
65054	Human Settlement	Other	Navarre	Navarre	Private	Medium
65058	Human Settlement	Other	Deep Lead	37th Parallel RD	Private	High
65056	Human Settlement	Other	Marnoo	Marnoo	Private	Medium
65015	Human Settlement	Other	Glenorchy	Glenorchy	Private	High
65055	Human Settlement	Other	Black Range Stawell	Ganawarra RD	Private	Extreme
65052	Human Settlement	Residential	Stawell North	Ironbark Interface	Private	Extreme
65053	Human Settlement	Other	Saint Arnaud East	Saint Arnaud	Private	Extreme
65010	Human Settlement	Residential	Halls Gap	Halls Gap Complex	Private	Extreme
65051	Human Settlement	Other	Stuart Mill	Stuart Mill	Other	High
65016	Human Settlement	Residential	Great Western	Great Western	Private	Medium
65012	Human Settlement	Residential	Saint Arnaud Interface	Saint Arnaud	Private	Very High
65057	Human Settlement	Residential	Stawell London Road Sisters Rocks	Stawell	Private	Extreme
65013	Human Settlement	Residential	Stawell Interface	Stawell	Private	High
6552379	Human Settlement	Other	Ararat Halls Gap Road	Ararat Halls Gap RD Halls Gap	Private	Very High

6552380	Human Settlement	Other	Roses Gap	Roses Gap RD Roses Gap	Private	Extreme
65037	Human Settlement	Special Fire Protection	Grampians Gardens Caravan Park	2223 Grampians RD Halls Gap	Private	High
65008	Human Settlement	Special Fire Protection	MacKenzie Falls Visitor Node	57 Cranages RD Zumsteins	Private	Extreme
65031	Human Settlement	Special Fire Protection	Marnoo PS	McKinnon ST Marnoo	Other	High
65035	Human Settlement	Special Fire Protection	Lake Fyans Holiday Park and RSL Camp	650 Mokepilly RD Lake Fyans	Other	Extreme
65046	Human Settlement	Special Fire Protection	Seed Camp	Cnr Sunraysia Hwy and Church Street, Stuart Mill	Private	Very High
65024	Human Settlement	Special Fire Protection	Concongella PS	Concongella School RD Concongella	Other	Very High
65038	Human Settlement	Special Fire Protection	Halls Gap Lakeside Caravan Park	Tymna DR Halls Gap	Other	High
65042	Human Settlement	Special Fire Protection	Camp Acacia	Grampians RD Halls Gap	Private	Very High
65044	Human Settlement	Special Fire Protection	Teddington Camping Ground	Teddington RD St Arnaud Range NP	Parks Vic	Very High
65036	Human Settlement	Special Fire Protection	Parkgate Resort	2372 Grampians RD Halls Gap	Private	Very High
65003	Human Settlement	Special Fire Protection	Zumsteins Day Visitors Site	Mt Victory RD Grampians NP	Parks Vic	Very High
65048	Human Settlement	Special Fire Protection	Stawell Park Caravan Park	2 Monaghan RD Stawell	Private	Very High
65034	Human Settlement	Special Fire Protection	The Anglers Caravan Park and Scout Camp	Springwood Hill RD Lake Fyans	Other	Extreme
65006	Human Settlement	Special Fire Protection	Halls Gap Camping Ground	23-27 Tymna DVE Halls Gap	Private	Extreme
65001	Human Settlement	Special Fire Protection	Plantation Camping Ground	Halls Gap - Mt Zero RD Grampians NP	Parks Vic	Extreme
65026	Human Settlement	Special Fire Protection	Stawell SC	Patrick ST Stawell	Other	High
65032	Human Settlement	Special Fire Protection	St Patricks PS	Wattle ST Saint Arnaud	Private	High
65005	Human Settlement	Special Fire Protection	Boreang Camping Ground	Glenelg River RD Grampians NP	Parks Vic	Very High

65043	Human Settlement	Special Fire Protection	Roses Gap Recreation Centre	Roses Gap RD Roses Gap	Private	Very High
65033	Human Settlement	Special Fire Protection	Saint Arnaud Health Precinct	52 North Western RD Saint Arnaud	Private	Very High
65004	Human Settlement	Special Fire Protection	Smith Mill Camping Ground	Smith RD Grampians NP	Parks Vic	Extreme
65039	Human Settlement	Special Fire Protection	Tandara Lutheran Youth Camp	Tandara RD Halls Gap	Private	Extreme
65002	Human Settlement	Special Fire Protection	Stapylton Camping Ground	Millar RD Grampians NP	Parks Vic	Extreme
65025	Human Settlement	Special Fire Protection	Glensvale School	Cahill RD Stawell	Other	Very High
65007	Human Settlement	Special Fire Protection	Borough Huts Camping Ground	Grampians RD Grampians NP	Parks Vic	Extreme
65040	Human Settlement	Special Fire Protection	Norval Lodge Youth Camp	1-3 Ellis ST Halls Gap	Private	Extreme
65041	Human Settlement	Special Fire Protection	Aginda Youth Camp	Scott RD Halls Gap	Private	Extreme
65030	Human Settlement	Special Fire Protection	Navarre PS	High ST Navarre	Other	High
65028	Human Settlement	Special Fire Protection	Halls Gap PS	10 - 14 Halls Gap RD Halls Gap	Other	Extreme
6550777	Human Settlement	Special Fire Protection	Great Western PS	Stephenson ST	Public	High
6550778	Human Settlement	Special Fire Protection	Stawell West PS	80-88 Cooper ST	Public	High
6550786	Human Settlement	Special Fire Protection	St Patrick's School	55 Patrick's ST	Public	High
6550787	Human Settlement	Special Fire Protection	St Arnaud Secondary College	Smith ST	Public	High
6552385	Human Settlement	Special Fire Protection	Eventide Retirement Village	111 Patrick ST Stawell	Private	High
6552386	Human Settlement	Special Fire Protection	Walkers Lake Caravan Park	Avon Plains RD	Private	Very High
6552387	Human Settlement	Special Fire Protection	Lake Lonsdale Campground	Sandbar RD Lonsdale	Private	Extreme

Appendix D – Strategic fire breaks map and table



Strategic Fire Breaks within the Northern Grampians Shire (updated March 2023)					
Strategic Fire Suppression Lines					
Locality	Road Name	From	To	Land Manager	Treatment
Callawadda	Donald-Stawell Rd (C238)	Creek Rd	100m north of Willaring Rd	RRV	Slash, Fence to Fence*
Gooroc	Lanfrankie Rd	Sunraysia Hwy (B220)	Wimmera Hwy (B240)	NGSC	Slash, Fence to Fence*
Halls Gap	Silver Springs Rd	Grampians Rd (C216)	<i>End of Road</i>	NGSC	Slash, Fence to Fence*
Marnoo	Donald-Stawell Rd (C238)	Wimmera Hwy (B240)	<i>1km south of Auvergne Rd</i>	RRV	Slash, Fence to Fence*
Marnoo	Ralunana Rd	Newall St (C238), Marnoo	Wallaloo Creek, Marnoo	NGSC	Slash, Fence to Fence*
Marnoo	Wimmera Hwy (B240)	<i>500m west of Donald-Stawell Rd (C238)</i>	<i>500m east of Donald-Stawell Rd (C238)</i>	RRV	Slash, Fence to Fence*
Navarre	Ararat-St Arnaud Rd (C241)	High St	150m north of Cambridge St	RRV	Slash, Fence to Fence*
Navarre	High St	Tulkara Railway Rd	Hare St	NGSC	Slash, Fence to Fence*
Stawell	Western Hwy (A8)	450m SE of Yellow Box Rd	Grampians Rd (C216)	RRV	Slash, Fence to Fence*
Stawell	Western Hwy (A8)	Sloane St	<i>100m north of Gilchrist Rd</i>	RRV	Slash, Fence to Fence*
Stawell	Pomonal Rd (C221)	Burgh St	McCanns Bushland Reserve	RRV	Slash, Fence to Fence*
Stawell	Stawell Aerodrome	Both North-South and East-West runways for the entire length		NGSC	Slash, Fence to Fence*
Stuart Mill	Sunraysia Hwy (B220)	Paulin La	Church St	RRV	Slash, Fence to Fence*
Fire Control Lines					
Locality	Road Name	From	To	Land Manager	Treatment
Beazleys Bridge	Sandy Creek Road	Old Sandy Creek Rd	Ararat-St Arnaud Rd (C241)	NGSC	Spray first, slash if needed (3m cut behind guide posts*)

Beazleys Bridge	Jacksons Rd	Sandy Creek Rd	Darcy's Bridge Rd	NGSC	Spray first, slash if needed (3m cut behind guide posts*)
Beazleys Bridge	Darcys Bridge Rd	Jacksons Rd	Wimmera Hwy (B240)	NGSC	Spray first, slash if needed (3m cut behind guide posts*)
Beazleys Bridge	Wingfield Rd	Sandy Creek Rd	Ararat-St Arnaud Rd (C241)	NGSC	Spray first, slash if needed (3m cut behind guide posts*)
Callawadda	Willaring Rd	Donald-Stawell Rd (C238), Calawadda	Wallaloo East Rd, Wallaloo East	NGSC	Slash, 3m cut behind guide posts*
Campbells Bridge	Greens Creek Rd	Donald-Stawell Rd (C238), Campbells Bridge	Wallaloo East Rd, Greens Creek	NGSC	Slash, 3m cut behind guide posts*
Carapooee	Dunolly Rd	Sunraysia Hwy (B220), Carapooee West	Shire Boundary, Avoca River, Emu	NGSC	Slash, 3m cut behind guide posts*
Carapooee	Kooreh Rd	Harman Rd	Wimmera Hwy (C241)	NGSC	Spray first, slash if needed (3m cut behind guide posts*)
Coonooer Bridge	Burrumbite Rd	St Arnaud-Wycheproof Rd (C271), Sutherland	Lewis Rd, Coonooer West	NGSC	Slash, 3m cut behind guide posts*
Coonooer Bridge	Boundary Rd	St Arnaud-Wycheproof Rd (C271)	Phillips Rd	NGSC	Spray first, slash if needed (3m cut behind guide posts*)
Coonooer Bridge	Phillips Rd	Boundary Rd	Valpine Rd	NGSC	Slash, 3m cut behind guide posts*
Coonooer Bridge	Valpine Rd	Phillips Rd	River Rd	NGSC	Slash, 3m cut behind guide posts*
Deep Lead	Stawell-Warracknabeal Rd (C235)	Western Hwy (A8), Deep Lead	Shire Boundary, Bismark-Lubeek Rd, Wal Wal	RRV	Slash, 3m cut behind guide posts*
Glenorchy	Ti Tree Swamp Rd	Stawell-Warracknabeal Rd (C235), Glenorchy	Melbourne-Adelaide Railway Line, Glenorchy	RRV	Slash, 3m cut behind guide posts*
Glenorchy	Phillips Rd	Western Hwy (A8), Dadswells Bridge	Stawell-Warracknabeal Rd (C235), Glenorchy	NGSC	Slash, 3m cut behind guide posts*

Glenorchy	Murtoa-Glenorchy Rd (C237)	Shire Boundary, Bismark-Lubeck Rd, Lubeck	Stawell-Warracknabeal Rd (C235), Glenorchy	RRV	Slash, 3m cut behind guide posts*
Glenorchy	Glenorchy Rd	Minnieboro Rd, Riachella	Melbourne-Adelaide Railway Line, Glenorchy	NGSC	Slash, 3m cut behind guide posts*
Glenorchy	Campbells Bridge Rd	Melbourne-Adelaide Railway Line, Glenorchy	Donald Stawell Rd (C238), Campbells Bridge	NGSC	Slash, 3m cut behind guide posts*
Gooroc	Caine Rd	St Arnaud-Wycheproof Rd (C271)	McGrath Rd	NGSC	Spray first, slash if needed (3m cut behind guide posts*)
Gooroc	Romey Rd	McGrath Rd	Swanwater Rd	NGSC	Spray first, slash if needed (3m cut behind guide posts*)
Gooroc	Michael Rd	Fitzpatrick Rd	Yelta-Melbourne Railway Line	NGSC	Slash, 3m cut behind guide posts*
Gooroc	Lanfrankie Rd	Sunraysia Hwy(B220)	Dunstan Rd	NGSC	Spray first, slash if needed (3m cut behind guide posts*)
Gooroc	Swanwater North Rd	Swanwater Rd	Burrumbite Rd	NGSC	Spray first, slash if needed (3m cut behind guide posts*)
Great Western	Western Hwy (A8)	St Ethels Rd, Great Western	Shire Boundary, 500m S of Railway Overpass, Armstrong	RRV	Slash, 3m cut behind guide posts*
Great Western	Bests Rd	Western Hwy (A8), Great Western	Mailes Rd, Great Western	NGSC	Slash, 3m cut behind guide posts*
Great Western	Sandy Creek Rd	St Peters Rd, Great Western	Mailes Rd, Great Western	NGSC	Slash, 3m cut behind guide posts*
Great Western	St Ethels Rd, Great Western	Garden Gully Rd, Great Western	Western Hwy (A8)	NGSC	Slash, 3m cut behind guide posts*
Great Western	Melbourne-Adelaide Railway Line	St Georges Rd, Great Western	St Ethels Rd, Great Western	ARTC	Spray first, slash if needed (3m cut behind guide posts*)
Greens Creek	Wimmera Downs Rd	Stawell-Avoca Rd (C221), Greens Creek	Landsborough Rd, Joel Joel	NGSC	Slash, 3m cut behind guide posts*

Wallaloo East	Wallaloo East Rd	Stawell-Avoca Rd (C221), Greens Creek	Kabinga Rd, Wallaloo East	NGSC	Slash, 3m cut behind guide posts*
Gre Gre	Carrols Bridge Rd	Baldwin Plains Rd, Gre Gre South	Wimmera Hwy (B240), Gre Gre North	NGSC	Slash, 3m cut behind guide posts*
Halls Gap	Grampians Rd (C216)	Ararat-Halls Gap Rd (C222), Halls Gap	Western Hwy (A8), Stawell	RRV	Slash, 3m cut behind guide posts*
Halls Gap	Grampians Road	Fyans Creek Rd	Reids Lane	NGSC	Slash, 3m cut behind guide posts*
Joel South	Joel South Rd	Landsborough Rd, Joel South	Joel Joel Rd, Joel South	NGSC	Slash, 3m cut behind guide posts*
Joel Joel	Joel Joel Rd	Landsborough Rd, Joel Joel	Shire Boundary, 2.5 km S Bulgana Rd, Crowlands	NGSC	Slash, 3m cut behind guide posts*
Kooreh	Wedderburn Rd	Wimmera Hwy (B240)	Barneys La	NGSC	Spray first, slash if needed (3m cut behind guide posts*)
Kooreh	Stockham Bridge Rd	Gowar East Rd	Proctor Rd	NGSC	Spray first, slash if needed (3m cut behind guide posts*)
Kooreh	Gowar East Rd	From 400m south of Stockham Bridge Rd	Hewitt Rd	NGSC	Spray first, slash if needed (3m cut behind guide posts*)
Kooreh	Proctor Road	Wimmera Hwy (B240)	Stockham Bridge Rd	NGSC	Spray first, slash if needed (3m cut behind guide posts*)
Marnoo	Donald-Stawell Rd (C238)	Creek Rd	1km south of Auvergne Rd, Marnoo	RRV	Slash, 3m cut behind guide posts*
Marnoo	Donald-Stawell Rd (C238)	Wimmera Hwy (B240), Marnoo	Shire Boundary, Bell La, Rich Avon East	RRV	Slash, 3m cut behind guide posts*
Marnoo	Bolangum Inn Rd	Wallaloo East Rd, Marnoo	Donald-Stawell Rd (C238), Marnoo	NGSC	Slash, 3m cut behind guide posts*

Marnoo	Soldiers Rd	Donald-Stawell Rd (C238), Marnoo West	<i>End of sealed section, 500m south of Carrs Plain Rd, Marnoo West</i>	NGSC	Slash, 3m cut behind guide posts*
Marnoo	Soldiers Rd	Frews Loop Rd, Marnoo West	Ralunana Rd, Marnoo West	NGSC	Slash, 3m cut behind guide posts*
Marnoo	Raluana Rd	Soldiers Rd, Marnoo West	Wallaloo Creek, Marnoo	NGSC	Slash, 3m cut behind guide posts*
Marnoo	Donald-Stawell Rd (C238)	Auvergne Rd	400m south	RRV	Slash, 3m cut behind guide posts*
Marnoo	Wimmera Hwy (B240)	Shire Boundary, Banyena Silo Rd, Marnoo West	<i>500m west of Donald-Stawell Rd (C238), Marnoo</i>	RRV	Slash, 3m cut behind guide posts*
Marnoo	Wimmera Hwy (B240)	<i>500m east of Donald-Stawell Rd (C238), Marnoo</i>	Wolseley St, St Arnaud	RRV	Slash, 3m cut behind guide posts*
Marnoo	Baldwin Plains Rd	Wimmera Hwy (B240), Marnoo East	Carrols Bridge Rd, Gre Gre South	NGSC	Slash, 3m cut behind guide posts*
Mokepilly	Mokepilly Rd	Grampians Rd (C216), Mokepilly	Pomonal Rd (C221), Lake Fyans	NGSC	Slash, 3m cut behind guide posts*
Moyreisk	Maryborough-St Arnaud Rd (C275)	Sunraysia Hwy (B220), Moyreisk	Shire Boundary, South Rd, Natte Yallock	RRV	Slash, 3m cut behind guide posts*
Natte Yallock	Slater Rd	Archdale Rd	St Arnaud - Maryborough Rd	NGSC	Spray first, slash if needed (3m cut behind guide posts*)
Natte Yallock	Evans Rd	Slater Rd	St Arnaud-Maryborough Rd	NGSC	Spray first, slash if needed (3m cut behind guide posts*)
Natte Yallock	Moyreisk North Rd	Coates Rd	the Avoca River	NGSC	Spray first, slash if needed (3m cut behind guide posts*)
Natte Yallock	Peck Rd	Moyreisk North Rd	Archdale Rd	NGSC	Spray first, slash if needed (3m cut behind guide posts*)
Navarre	Tulkara Railway Rd	Landsborough Rd, Landsborough West	Stawell-Avoca Rd (C221), Navarre	NGSC	Slash, 3m cut behind guide posts*

Navarre	Ararat-St Arnaud Rd (C241)	Shire Boundary, Stawell-Avoca Rd (C221), Navarre	High St, Navarre	RRV	Slash, 3m cut behind guide posts*
Navarre	Ararat-St Arnaud Rd (C241)	150m north of Cambridge St	Wimmera Hwy (B240), Moolerr	RRV	Slash, 3m cut behind guide posts*
Slaty Creek	Slaty Creek Rd	Burrumbite Rd	Charlton-St Arnaud Rd	NGSC	Spray first, slash if needed (3m cut behind guide posts*)
Slaty Creek	Robinson Rd	Charlton - St Arnaud Rd	Yawong Rd	NGSC	Spray first, slash if needed (3m cut behind guide posts*)
Slaty Creek	Pole Road	Wedderburn Road	Yawong Road	NGSC	Spray first, slash if needed (3m cut behind guide posts*)
Slaty Creek	Vogel Road	Pole Road	Yawong Road	NGSC	Spray first, slash if needed (3m cut behind guide posts*)
Slaty Creek	Yawong Rd	Robinson Rd	Yawong Low Water Bridge (Avoca River)	NGSC	Spray first, slash if needed (3m cut behind guide posts*)
Stawell	Western Hwy (A8)	Shire Boundary, Roses Gap Rd, Dadswells Bridge	450m SW of Yellow Box Rd	RRV	Slash, 3m cut behind guide posts*
Stawell	Western Hwy (A8)	Gilchrist Rd, Stawell	St Georges Rd, Great Western	RRV	Slash, 3m cut behind guide posts*
Stawell	Aerodrome Rd	Grampians Rd (C216), Stawell	Pipetrack Rd	NGSC	Slash, 3m cut behind guide posts*
Stawell	Pomonal Rd (C221)	McCanns Bushland Reserve, Stawell	Shire Boundary, 500m S of Mokepilly Rd , Lake Fyans	RRV	Slash, 3m cut behind guide posts*
Stawell	London Rd (C238)	Western Hwy (A8), Stawell	Melbourne-Adelaide Railway Line, Stawell	RRV	Slash, 3m cut behind guide posts*
Stawell	Donald-Stawell Rd (C238)	Newington Rd, Stawell	100m north of Willaring Rd	RRV	Slash, 3m cut behind guide posts*
Stawell	Concongella School Rd	Landsborough Rd, Concongella	Stawell-Avoca Rd (C221), Stawell	NGSC	Slash, 3m cut behind guide posts*

Stawell	Landsborough Rd	Navarre Rd (C221), Stawell	Shire Boundary, Slorach Rd, Landsborough West	NGSC	Slash, 3m cut behind guide posts*
Stawell	Stawell-Avooca Rd (C221)	Crowlands Rd, Stawell	Tulkara Railway Rd, Navarre	RRV	Slash, 3m cut behind guide posts*
St Arnaud	Wimmera Hwy (B240)	Daly Rd, St Arnaud	Shire Boundary, Avooca River, Logan	RRV	Slash, 3m cut behind guide posts*
St Arnaud	Banyena Rd	Shire Boundary, Banyena Silo Rd, Banyena	Sunraysia Hwy (B220), St Arnaud North	NGSC	Slash, 3m cut behind guide posts*
St Arnaud	Sunraysia Hwy (B220)	Shire Boundary, Memorial La, Cope Cope	Canterbury St, St Arnaud	RRV	Slash, 3m cut behind guide posts*
St Arnaud	Sunraysia Hwy (B220)	Yelta-Melbourne Railway line, St Arnaud	Paulin La, Stuart Mill	RRV	Slash, 3m cut behind guide posts*
St Arnaud	Lock Rd	Goldfields Reservoir, St Arnaud	Sunraysia Hwy (B220), St Arnaud	NGSC	Slash, 3m cut behind guide posts*
St Arnaud	St Arnaud-Wycheproof Rd (C271)	Wheeler St, St Arnaud	Shire Boundary, Boundary Rd, Coonooer West	RRV	Slash, 3m cut behind guide posts*
St Arnaud	Charlton-St Arnaud Rd (C272)	Hoptoun St, St Arnaud	Shire Boundary, Avooca River, Coonooer Bridge	RRV	Slash, 3m cut behind guide posts*
St Arnaud	Yelta-Melbourne Railway Line	Sunraysia Hwy (B220), St Arnaud (<i>south crossing</i>)	Carapooeee Rd, St Arnaud East	VLine	Spray first, slash if needed (3m cut behind guide posts*)
Stuart Mill	Sunraysia Hwy (B220)	Church St, Stuart Mill	Shire Boundary, Hines La, Redbank	RRV	Slash, 3m cut behind guide posts*
Stuart Mill	Stuart Mill Low Rd	Sunraysia Hwy (B220), Stuart Mill	Dunolly Rd, Carapooeee	NGSC	Slash, 3m cut behind guide posts*
Stuart Mill	Stuart Mill Low Rd	Sunraysia Hwy (B220)	Topliss Rd	NGSC	Spray first, slash if needed (3m cut behind guide posts*)
Stuart Mill	Oxford Street	Sunraysia Hwy	Teddington Rd	NGSC	Spray first, slash if needed (3m cut behind guide posts*)
Traynors Lagoon	Traynors Lagoon Rd	Wimmera Hwy (B240), Marnoo East	Banyena Rd, Traynors Lagoon	NGSC	Slash, 3m cut behind guide posts*

Wal Wal	Wal Wal Station Rd	Murtoa-Glenorchy Rd (C237), Wal Wal	Stawell-Warracknabeal Rd (B210), Wal Wal	NGSC	Slash, 3m cut behind guide posts*
Wal Wal	Minnieboro Rd	Stawell-Warracknabeal Rd (B210), Wal Wal	Glenorchy Rd, Riachella	NGSC	Slash, 3m cut behind guide posts*
Priority Egress/Access Roads					
Locality	Road Name	From	To	Land Manager	Treatment
Halls Gap	Grampians Rd (C216)	Bellfield Cr	Ararat-Halls Gap Rd (C222)	RRV	Tree Maintenance / Slashing - Trimming back for safety clearance
Halls Gap	Ararat-Halls Gap Rd (C222)	Grampians Rd (C216)	Trajul Rd	RRV	Tree Maintenance / Slashing - Trimming back for safety clearance
Roses Gap	Roses Gap Rd	Morgans Bridge	1008 Roses Gap Rd, Roses Gap	NGSC	Tree Maintenance / Slashing - Trimming back for safety clearance
General Egress/Access Roads					
Locality	Road Name	From	To	Land Manager	Treatment
Halls Gap	Reids Ln	Grampians Rd	Thryptomene Ct	NGSC	Slash, 3m cut behind guide posts*
Halls Gap	Tymna Dr	Grampians Rd	Halls Gap Lakeside Caravan Park	NGSC	Slash, 3m cut behind guide posts*
Redbank	Grants Rd	Sunraysia Hwy (B220)	Smith Rd	NGSC	Spray first, possible slash if needed
Redbank	Bandts Rd	Grants Rd	St Arnaud-Maryborough Rd	NGSC	Spray first, possible slash if needed
Stuart Mill	Teddington Rd	Sunraysia Hwy (B220)	3km south along Teddington Rd	NGSC	Spray first, possible slash if needed (both sides)
Traynors Lagoon	Batyo Rd	Wells Rd	Banyena Rd	NGSC	Slash, 3m cut behind guide posts*
Traynors Lagoon	Campbell Rd	Wells Rd	Volcano Rd	NGSC	Slash, 3m cut behind guide posts*
Grays Bridge	Old Banyena Rd	Wrights Rd	Bryce Rd	NGSC	Slash, 3m cut behind guide posts*

Traynors Lagoon	Harman Rd	Dunolly Rd	Kooreh Rd	NGSC	Spray first, possible slash if needed
CFA Brigade Works					
Locality	Road Name	From	To	CFA Brigade	Treatment
Callawadda	Willaring Rd	Between Aitken Rd and Walter Rd	Walter Rd	Callawadda	Burn (north side)
Callawadda	Donald-Stawell Rd (C238)	Carson Rd	Morris Rd	Callawadda	Burn (west side)
Glenorchy	Glenorchy Oval	Clarke St Glenorchy		Glenorchy & Riachella	Burn
Joel Joel	Wimmera Downs Rd	Greens Creek	Landsborough Rd	Joel Joel	Burn
Joel Joel	Joel Joel Rd	Landsborough Rd	Joel South Rd	Joel Joel	Burn
Landsborough West	Tulkara Railway Rd	Landsborough Rd	Landsborough West tennis courts	Joel Joel	Burn
Navarre	Disused Tulkara Rail Yard, Nobbys Lane - Private Rd /Nobbys Lane	Bains Road	Rickards Rd - west side	Navarre	Burn
Navarre	Navarre Sports Association Reserve	Ararat - St Arnaud Rd	Disused Road - west end of reserve	Navarre	Burn

**Northern Grampians Shire
Municipal Fire Management Planning Committee
(MFMPC)**

Terms of Reference

June 2023

1. CONTEXT

The Northern Grampians Shire (NGS) Municipal Fire Management Planning Committee (MFMP) is established and undertakes planning as a subcommittee of the Municipal Emergency Management Planning Committee (MEMPC) formed under the *Emergency Management Act 2013*.

- The MFMP will be chaired from within its membership.
- The MFMP will receive support and guidance from the Regional Emergency Management Planning Committee (REMP) (via the MEMPC).
- Composition will be determined by the MEMPC.

2. SCOPE

The Committee's scope, of which the development of a Municipal Fire Management Plan (MFMP) is part, is to provide a local level forum to build and sustain organisational partnerships, generate a common understanding and shared purpose regarding fire management, ensure that the plans of individual agencies are linked and complement each other, and to collectively achieve a reduction in fire risk to the municipal community.

3. FUNCTIONS

The Northern Grampians Shire MFMP functions as a subcommittee of the MEMPC to:

- Plan the burning or clearing of firebreaks.
- Advise the appropriate authorities as to the existence of and steps to be taken for the removal of fire hazards within the area.
- Advise and make recommendations to the MEMPC in the preparation of its MFMP.
- Recommend to CFA or to the appropriate authorities (as the case may require) any action which the committee deems necessary or expedient to be taken for reducing the risk of an outbreak of fire or for suppressing any fire which may occur within the area.
- Advise the Municipal Fire Prevention Officer (MFPO) concerning the removal of fire hazards under S41 of the [CFA Act 1958](#).
- Refer to the REMPC (via the MEMPC) for consideration all matters which in the opinion of the MFMP should be so referred.
- Carry out such other functions as are conferred or imposed upon the MFMP by the MEMPC.

4. MEMBERSHIP

4.1 Core membership

The MFMP, appointed by the MEMPC, has core representation from the following organisations:

- Northern Grampians Shire Council (NGSC)
- Country Fire Authority (CFA)
- Forest Fire Management Victoria (FFMV)

- Victoria Police
- Department of Transport (DOT)
- Grampians Wimmera Mallee Water (GMMWater)

4.2 Chairperson

The CFA District 16 Commander is the nominated Chairperson for the NGS MFMP. If the Chairperson is unable to attend a meeting, they will nominate a proxy from within their agency who will act as Chairperson for that meeting.

4.3 Proxies

Representatives of core member agencies / organisations who are unable to be present at MFMP meetings must nominate a suitably skilled and authorised representative from their agency / organisation a minimum of 24 hours to the MFMP Chairperson, in writing, before the meeting is scheduled to occur. This proxy is considered to have the same voting rights as the substantive MFMP member, unless the MFMP Chairperson is advised otherwise.

4.4 Additional representation

The core MFMP may invite additional representation from other agencies or organisations with key skills and knowledge to join the MFMP as necessary. These members will not have right to propose or vote on motions requiring a decision by the MFMP, but are welcome to contribute knowledge, information, and insight on behalf of their organisation to the MFMP. The following agencies and organisations may be invited to meetings when required.

- Ambulance Victoria
- AusNet Services
- Department of Families, Fairness & Housing
- Powercor
- Others as required.

5. MEETING FREQUENCY

The MFMP will meet at least two times per year (pre and post fire season) unless otherwise required.

6. MEETING VENUE

NGS MFMP meetings will be held in the Stawell Council Chambers unless determined otherwise by the committee. Online meeting options will be enabled to support remote access as needed.

7. QUORUM

A quorum is greater than 50% (50% + 1) attendance of the current voting members and includes the MFMP Chairperson or Deputy Chairperson. The MFMP may meet in the absence of a quorum being

present, however no decision-making processes, such as motions, may be actioned until a quorum is present.

8. VOTING RIGHTS

The core member agencies and organisations are allocated 1 vote per agency / organisation for the purposes of decision making within the MFMPC. The Chairperson has a casting vote if votes on a matter are equal. Additional representatives do not have voting rights for the purposes of decision making within the MFMPC.

9. ADMINISTRATIVE AND REPORTING REQUIREMENTS

The MFMPC will report two times per year to the MEMPC.

Administrative support requirements will be determined by the committee and resourced through committee members where possible. Planning processes will be managed and supported with technical expertise by relevant fire services.

The administration of the MFMPC includes maintaining the committee contact list, scheduling meetings, providing committee members with the meeting agenda, and documenting and distributing minutes and other relevant correspondence. This role is performed by council's MFPO.

The proceedings, information, and documentation of the MFMPC is considered confidential unless determined by the MFMPC, however these records remain discoverable under the *Freedom of Information Act 1982*.

Any member can submit items to be included on the agenda. The agenda will be confirmed prior to each meeting. Minutes of MFMPC meetings will be forwarded to all representative members of the MFMPC (including additional members, excluding observers).

Core member organisations / agencies of the MFMPC are asked to submit a written report a minimum of 7 days prior to the scheduled MFMPC meeting. Written reports are to be also presented verbally to the MFMPC during the scheduled meetings and will be recorded within the minutes of the meeting.

Representatives of additional member agencies / organisations may submit a written report to the MFMPC Chairperson if the issue / topic is considered of importance to the MFMPC, otherwise a verbal report may be submitted at the MFMPC and will be recorded in the minutes of the meeting.

Any issues that require escalation will be conveyed by the MFMPC Chairperson to the NGS MEMPC.

Appendix F – Stakeholder Analysis & Communications & Engagement Plan

Stakeholder type and engagement level

Stakeholder type	Description	IAP2 participation level
Internal	Formal responsibilities for MFMP process and outcomes.	Collaborate & empower
Primary	MFMPC membership, responsibility for the development of the plan, communication, and engagement across and within organisations	Collaborate & empower
Secondary	REMPC membership or fire management role within municipality, may be requested to provide specific inputs, dependent upon outputs, or requested to be involved in specific tasks.	Consult & involve
Tertiary	Strong interest in outcomes and may have valuable information / viewpoints to share.	Inform & consult

Fire management role definitions

Role	Definition
Coordination	Coordination of emergency fire incidents.
Control Agency	Control of fire incidents.
Land manager	Manages land within Northern Grampians Shire.
Response	Has a role in responding to a fire incident.
Relief / Recovery	Has a role in relief / recovery phases of a fire incident.
Community Info	Provides information to the community in relation to a fire incident.
Community Care	Provides community care and support during and after a fire incident.
Asset protection	Responsible for protection of identified (private or public) assets within Northern Grampians Shire (for mitigation purposes not during Response).
Regulate	Responsible for regulation related to fire management (i.e., legislation, guidelines, local laws, planning regulations).

NGS MFMP Stakeholder Analysis										
Stakeholder	Fire management role within Grampians region									
	Coordination	Control Agency	Land manager	Response	Relief / Recovery	Community information	Community care	Asset protection	Regulate	Other
Grampians REMPC				✓	✓	✓				Regional oversight
NGS MEMPC				✓	✓	✓	✓	✓		Municipal integrated & strategic emergency planning
NGS MFMP				✓	✓	✓	✓	✓		Municipal integrated & strategic fire planning
Primary										
NGSC	✓		✓	✓	✓	✓	✓	✓	✓	
CFA		✓		✓	✓	✓		✓	✓	Fire safety expertise
FFMV		✓	✓	✓	✓	✓		✓	✓	Forest fire expertise
GWMWater			✓			✓		✓		
DOT			✓	✓		✓		✓	✓	
Victoria Police	✓			✓	✓	✓			✓	
Secondary										
General public			✓	✓	✓	✓	✓	✓		Responsibility for private property, social networks & personal wellbeing
Emergency Management Victoria (EMV)									✓	
Emergency Recovery Victoria (ERV)					✓					
Department of Energy, Environment, & Climate Action (DEECA)					✓				✓	Oversight of rural adjustment & development programs, development of planning controls
Environment Protection Authority (EPA)				✓	✓	✓			✓	
AusNet Services						✓	✓			
Department of Families, Fairness & Housing (DFFH)					✓	✓	✓			
Department of Health (DoH)					✓	✓	✓			
Powercor						✓		✓		
Parks Victoria			✓	✓	✓	✓		✓	✓	Forest fire expertise
Victoria State Emergency Service (VICSES)				✓						
Australian Rail Track Corporation (ARTC)			✓					✓		
VicTrack			✓					✓		

NGS Municipal Fire Management Plan 2023-2026

VLine			✓					✓		
Regional Development Victoria (RDV)									✓	
Ambulance Victoria (AV)				✓			✓			
Agriculture Victoria					✓	✓	✓		✓	Animal health, agricultural loss & recovery responsibilities
Telstra						✓	✓	✓		
Department of Education & Training (DET)					✓	✓	✓			
Wimmera Catchment Management Authority (WCMA)			✓		✓			✓	✓	
Tertiary										
Australian Red Cross					✓	✓	✓			
Victorian Council of Churches – Emergencies Ministry (VCC-EM)					✓	✓	✓			
Uniting Wimmera					✓	✓	✓			
Stawell Neighbourhood House					✓	✓	✓			
Grampians Community Health					✓	✓	✓			
East Wimmera Health Service					✓	✓	✓			
Stawell Regional Health					✓	✓	✓			
Media			✓		✓	✓				
Local Landcare Groups					✓	✓		✓		

NGS MFMP Communication and Engagement Plan											
Stakeholder	Engagement Level	Engagement activity									
		Meeting minutes, reports & agendas	1:1 consulting	NGSC website	Email updates	Social media	Special meetings	Draft plan consultation	Notification of plan updates	3-year review	Individual org networks
Internal											
Grampians REMPC NGS MEMPC & MFMPC	Collaborate & empower	✓		✓	✓	✓	✓	✓	✓	✓	
Primary											
NGSC CFA DEECA GWMWater DOT Victoria Police	Collaborate & empower	✓	✓	✓	✓	✓	✓	✓	✓	✓	✓
Secondary											
General public EMV ERV DEECA EPA Parks Victoria AusNet Services DFFH DoH Powercor VICSES ARTC / VicTrack / VLine RDV AV DJPR - AgVic Telstra DET WCMA	Involve & consult			✓		✓			✓		✓
Tertiary											
Australian Red Cross VCC -EM Uniting Wimmera Stawell Neighbourhood House Grampians Community Health East Wimmera Health Service Stawell Regional Health Media Local Landcare Groups	Inform & consult			✓		✓		✓	✓	✓	

Appendix G – Bushfire risk treatments

Community Education and Engagement				
Objectives	Timeframe	Agency Treatments	Community / Individual Treatments	Outcome
<p>1. To build capacity and knowledge, resilience and understanding of the dangers of bushfire.</p> <p>2. To provide the tools and education opportunities for community and individuals to better prepare and understand the risks of bushfire.</p> <p>3. To build awareness and understanding of the role of fire in the environment.</p>	For the Plan duration.	<ul style="list-style-type: none"> Community education programs Agency Integrated Community engagement activities Bushfire awareness training Multimedia communications Victorian Bushfire Information Line Tourism fire safety campaigns Increase legislative and regulatory awareness Increased awareness of planning controls Targeted education campaign regarding the use and role of fire in the environment 	<ul style="list-style-type: none"> To be proactive and seek information To be involved in community education and engagement programs 	All agencies will review and evaluate programs and participation of community as part of the review process of the MFMP.

Hazard Reduction

Objectives	Timeframe	Agency Treatments	Community / Individual Treatments	Outcome
<p>1. To strategically reduce fuel to minimise impact, intensity and spread of bushfire.</p> <p>2. To plan and establish strategic points to effectively combat and manage bushfire activity.</p>	For the Plan duration.	<ul style="list-style-type: none"> Slashing program Burn program Spraying program Pruning program Use appropriate incident modelling tools to identify potential impacts to communities, such as the phoenix modelling tool 	<ul style="list-style-type: none"> Private property hazard reduction: <ul style="list-style-type: none"> Cleaning gutters Slashing Mowing Ploughing Grazing Fuel reduction burns 	Shared responsibility between agencies and individuals to minimise fire hazards.

Preparedness

Objectives	Timeframe	Agency Treatments	Community / Individual Treatments	Outcome
<p>1. To understand appropriate actions to reduce the risk and impact of bushfire, initiatives include:</p> <ul style="list-style-type: none"> Ignition prevention Risk identification and treatment Resource preparation Response planning Operational restrictions 	For the Plan duration.	<ul style="list-style-type: none"> VFRR process Establishment of Incident Control Centres Code red days Powerline inspections Township Protection Plans Neighbourhood Safer Places – Places of Last Resort Fire breaks Emergency Management Plan 	<ul style="list-style-type: none"> Personal bushfire preparedness plans Daily readiness Practice / rehearse plans 	<ul style="list-style-type: none"> All agencies regularly evaluate preparation and readiness to respond to fire. Strengthened capacity for agencies to provide an integrated response. Measurable reduction of the impact of bushfire.

<ul style="list-style-type: none"> - System testing - Security of water supply 		<ul style="list-style-type: none"> • Evacuation Plans • Brigade Pre Plans 		
--	--	---	--	--

Regulatory Controls

Objectives	Timeframe	Agency Treatments	Community / Individual Treatments	Outcome
<p>1. To implement regulation aimed at reducing the risk and impact of bushfire.</p> <p>2. To create and maintain effective linkages between planning functions to better inform proposed residential developments.</p>	For the Plan duration.	<ul style="list-style-type: none"> • Fire hazard inspections • Total fire bans • Planning schemes • Fire danger period • Building codes • Enforcement of fire hazard notices • Response to planning applications 	Comply with regulations	<ul style="list-style-type: none"> • Compliance with regulatory controls. • Appropriate residential development.

Appendix H – Structure fire risk treatments

Community Education and Engagement				
Objectives	Timeframe	Agency Treatments	Community / Individual Treatments	Outcome
<p>1. To build capacity and knowledge, resilience and understanding of the dangers of structure fire.</p> <p>2. To provide the tools and education opportunities for community and individuals to better prepare and understand the risks of structure fire.</p>	For the Plan duration.	<ul style="list-style-type: none"> Community education programs Community engagement activities Multimedia communications Increase legislative and regulatory awareness Increased awareness of planning controls 	<ul style="list-style-type: none"> To be proactive and seek information To be involved in community education and engagement programs 	<ul style="list-style-type: none"> All agencies will review and evaluate programs and participation of community as part of the review process of the MFMP.

Hazard Reduction				
Objectives	Timeframe	Agency Treatments	Community / Individual Treatments	Outcome
<p>1. To strategically reduce fuel to minimise impact, intensity and spread of structure fire.</p> <p>2. To plan and establish strategic points to effectively combat and manage structure fire activity.</p>	For the Plan duration.	<ul style="list-style-type: none"> Conduct fire safety inspections Buildings constructed according to the National Construction Code Use appropriate incident modelling tools to identify potential impacts to communities, such as the plume modelling tool 	<ul style="list-style-type: none"> Installation of sprinklers, smoke detectors, fire blankets, and extinguishers Comply with regulations 	Agencies and individuals working towards minimising the loss and damage caused by structural fires in the community

Preparedness				
Objectives	Timeframe	Agency Treatments	Community / Individual Treatments	Outcome
<p>1. To understand appropriate actions to reduce the risk and impact of structure fire, initiatives include:</p> <ul style="list-style-type: none"> – Ignition prevention – Risk identification and treatment – Resource preparation – Response planning – Operational restrictions – System testing – Security of water supply 	For the Plan duration.	<ul style="list-style-type: none"> • Emergency Management Plan • Evacuation Plans • Brigade Pre Plans 	<ul style="list-style-type: none"> • Daily readiness • Maintenance of sprinklers, smoke detectors and fire extinguishers • Building/staff fire drills 	<ul style="list-style-type: none"> • All agencies regularly evaluate preparation and readiness to respond to fire. • Measurable reduction of the impact of structure fire.

Regulatory Controls				
Objectives	Timeframe	Agency Treatments	Community / Individual Treatments	Outcome
<p>1. To implement regulation aimed to reducing risk and impact of Structure fire.</p> <p>2. To create and maintain effective linkages between planning functions to better inform proposed residential developments.</p>	For the Plan duration.	<ul style="list-style-type: none"> • Conduct fire safety inspections • Planning schemes • Building codes • Response to planning applications 	Comply with regulations	<ul style="list-style-type: none"> • Compliance with regulatory controls. • Appropriate residential development.